

## Motor Vehicle Crash Occupant Injuries, All Ages, 2012-2014

Injuries sustained as a motor vehicle crash (MVC) occupant is the 4<sup>th</sup> leading cause of injury death and 2<sup>nd</sup> leading cause of injury hospitalizations among Miami-Dade County residents.

Between the years 2012-2014:

- 312 Miami-Dade County residents died from MVC's.
- 3,159 residents were hospitalized as a result of MVC's.
- Approximately 40,000 residents were treated at an emergency department (ED) as a result of MVC's.

Injury Severity	2012	2013	2014	Total
Deaths	120	93	99	312
Hospitalizations	1,101	1,032	1,026	3,159
ED Visits	12,985	12,951	14,121	40,057
<b>Total</b>	<b>14,206</b>	<b>14,076</b>	<b>15,246</b>	<b>43,528</b>

- Among the 312 fatalities, 71% were drivers and 29% were passengers.
- 92% of fatal MVC victims were either drivers or passengers of cars or sport utility vehicles (SUV's) at the time of the crash

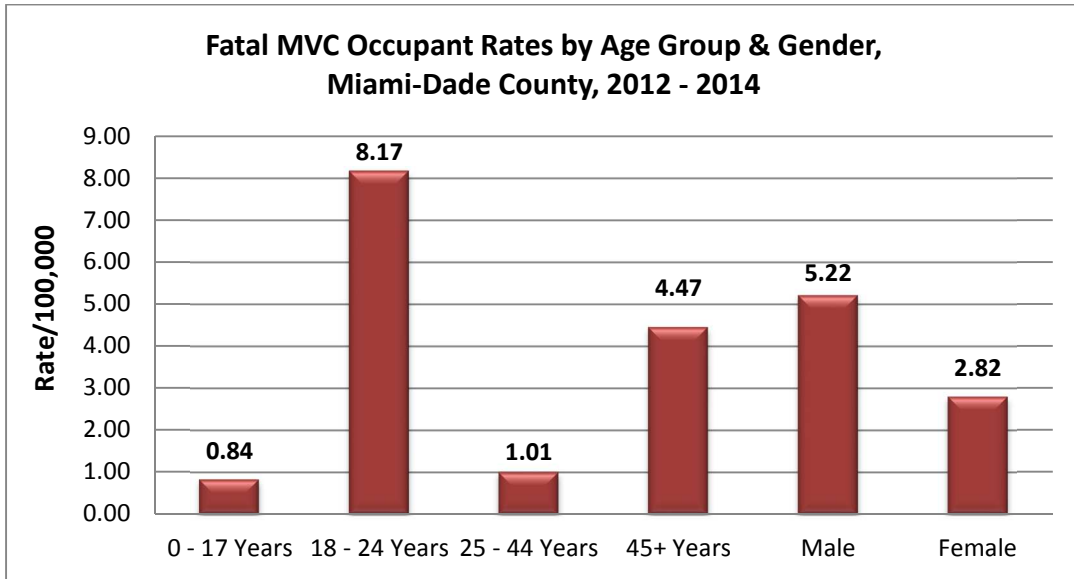
Vehicle Type	Driver	Passenger
Car/SUV	206	81
Pick-up Truck/Van	16	5
Other	1	3
<b>Total</b>	<b>223</b>	<b>89</b>

- During 2014, nonfatal MVC occupant injuries were estimated to cost nearly \$250 million in hospitalization and ED visit charges:

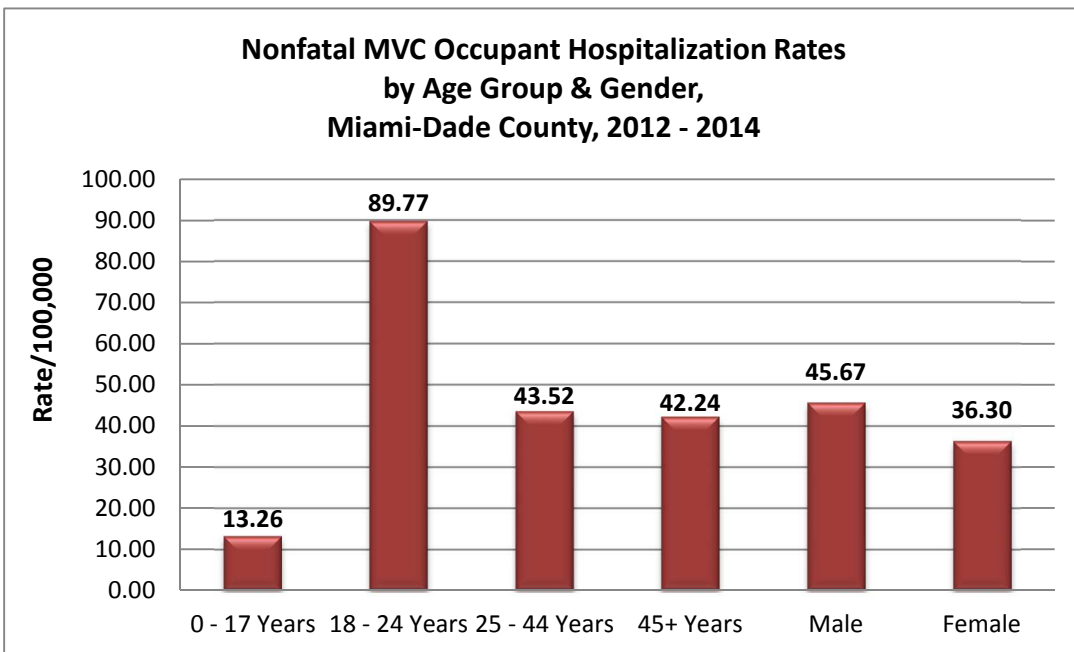
2014 Hospital & ED Charges for Nonfatal MVC injuries to Miami-Dade County Residents			
	<u>Number</u>	<u>Total Charges</u>	<u>Median Charge</u>
Hospitalizations	1,026	\$145,353,362	\$86,285
ED Visits	14,121	\$101,664,661	\$ 4,033
<b>All Nonfatal MVC Injuries</b>	<b>15,147</b>	<b>\$247,018,023</b>	<b>\$ 4,500</b>

The figures below display fatal and nonfatal MVC occupant injury rates by age and gender for 2012-2014.

- Fatal MVC rates were highest among young adults aged 18 - 24 years.
- Males were 1.85 times more likely than females to die from a MVC occupant crash.



- Nonfatal MVC occupant hospitalization rates among young adults aged 18 - 24 years were more than two times higher compared to any other age group.
- Nonfatal MVC occupant hospitalization rates for males were 26% higher versus females.



- Similar to hospitalizations, nonfatal MVC occupant ED rates were highest for young adults aged 18 - 24 years.
- Unlike hospitalizations, nonfatal MVC occupant ED rates for females were higher compared to males.

