

EPI Monthly Report

Florida Department of Health in Miami-Dade County

WWW.DADEHEALTH.ORG



2014 Updates to the *Table of Reportable Diseases or Conditions to be Reported*

Attention health care providers: the following updates are essential to accurate disease reporting. It is crucial that you begin to use the new disease report list and reporting form documents on pgs.3-4.

Diseases REMOVED from the *Table of Reportable Diseases or Conditions to Be Reported*

Diseases removed from the table include:

- Encephalitis, other (non-arboviral)
- Endemic typhus fever (*Rickettsia typhi*)
- Invasive Streptococcal disease, group A
- *Staphylococcus aureus*, community-associated mortality
- Toxoplasmosis
- Varicella mortality

Diseases ADDED to the *Table of Reportable Diseases or Conditions to Be Reported*

Diseases added to the table include:

- Chikungunya fever
- Neonatal abstinence syndrome (NAS)
- Typhus fever, epidemic

Diseases UPDATED in the *Table of Reportable Diseases or Conditions to Be Reported*

Diseases updated in the table include:

Arboviral infections

Arboviral infections updated to include any arboviral infections not specifically listed in the *Table of Reportable Diseases or Conditions to Be Reported*.

Background

All practitioners, hospitals and laboratories in Florida are required to notify the Florida Department of Health (DOH) of diseases or conditions of public health significance under Section 381.0031, Florida Statutes and Chapter 64D-3, Florida Administrative Code (FAC). Practitioners, hospitals, medical facilities, laboratories, schools, nursing homes, state institutions or other locations providing health services are required to notify DOH of diseases or conditions and the associated laboratory test results listed in the Table of Reportable Diseases or Conditions to Be Reported, Rule 64D-3.029, FAC. The public health system depends upon notification of diseases by physicians, laboratories, infection preventionists and other healthcare providers to monitor the health of the community.

Revisions have been made to the Table of Reportable Diseases or Conditions to Be Reported, Rule 64D-3.029, FAC, effective June 4, 2014. Revisions in 2014 were made in part to comply with the rule reduction initiative to simplify and streamline language in all of the FAC. Additional changes were made to reflect current public health needs for disease reporting and to align with national public health priorities.

Inside the Issue

1 2014 Updates to Table of Reportable Diseases

3 Reportable Diseases/ Conditions List

4 Practitioner Disease Report Form

5 EDC-IS Influenza/ Respiratory Illness Surveillance Report

6 Selected Reportable Diseases/ Conditions in June 2014

Epidemiology, Disease Control & Immunization Services

8600 NW 17th Street Suite 200

Miami, Florida 33126

Tel: (305) 470-5660

Fax: (305) 470-5533



EPI Monthly Report

Florida Department of Health in Miami-Dade County

WWW.DADEHEALTH.ORG

Dengue fever

Dengue fever, locally acquired must be reported immediately 24/7 by phone.

Possible exposure to herpes B virus

Possible exposure to herpes B virus is now explicitly listed as reportable (previously captured under possible exposure to rabies).

Haemophilus influenzae invasive disease

Health care providers are required to report H. influenzae invasive disease in children <5 years old.

Herpes simplex virus (HSV)

It is required to report herpes simplex virus (HSV) in infants <60 days old with disseminated infection and liver involvement; encephalitis; and infections limited to skin, eyes, and mouth; anogenital HSV in children <12 years old (age requirements changed from ≤ 6 , ≤ 12).

Human Immunodeficiency Virus (HIV) infection

HIV, exposed infants <18 months old born to an HIV-infected woman must be reported by the next business day.

Human papillomavirus (HPV)

It is required to report Human papillomavirus (HPV), associated laryngeal papillomas or recurrent respiratory papillomatosis in children <6 years old; anogenital papillomas in children <12 years old (age requirements changed from ≤ 6 , ≤ 12).

Vibriosis

Vibriosis now includes other closely related species *Photobacterium damsela* (formerly *Vibrio damsela*) and *Grimontia hollisae* (formerly *Vibrio hollisae*).

Rocky Mountain spotted fever

Rocky Mountain spotted fever has been expanded to include all spotted fever rickettsioses.

Streptococcus pneumoniae invasive disease

Health care providers are required to report S. pneumoniae invasive disease in children <6 years old.

More information:

In adherence to the changes in Florida's "Table of Reportable Diseases or Conditions to Be Reported", Miami-Dade County's reportable disease list and reporting form have been updated (see pgs. 3-4). The updated local documents are also on the Florida Department of Health in Miami-Dade County Disease Control website: <http://www.dadehealth.org/discontrol/DISCONTROLreport.asp>

The full text of the revised rule as well as materials and guidance documents for health care providers and laboratories for distribution are available on the Disease Reporting Information for Health Care Providers and Laboratories website (<http://floridahealth.gov/diseasereporting>).

Reportable Diseases/Conditions in Florida

Practitioner List

Effective 6/4/2014



+ Cancer, except non-melanoma skin cancer, and including benign and borderline intracranial and CNS tumors, (305)243-2639(Tel)	! Ricin toxicin poisoning
+ Congenital anomalies (850)245-4401(Tel) (850)922-8473(Fax)	● Rocky Mountain spotted fever and other spotted fever rickettsioses
Epidemiology (305)470-5660(Tel) (305)470-5533(Fax) <i>(Epidemiology, Disease Control & Immunization Services)</i>	! Rubella
! Outbreaks of any disease, any case, cluster of cases, or exposure to an infectious or non-infectious disease, condition, or agent found in the general community or any defined setting (e.g., hospital, school, other institution) not listed that is of urgen	● St. Louis encephalitis
☎ Amebic encephalitis	● Salmonellosis
! Anthrax	● Saxitoxin poisoning (paralytic shellfish poisoning)
● Arsenic poisoning	! Severe acute respiratory disease syndrome associated with coronavirus infection (SARS-CoV)
● Arboviral diseases not otherwise listed	● Shigellosis
! Botulism, foodborne, wound, and unspecified	! Smallpox
● Botulism, infant	☎ Staphylococcus enterotoxin B poisoning
! Brucellosis	☎ Staphylococcus aureus infection, intermediate or full resistance to vancomycin (VISA, VRSA)
● California serogroup virus disease	● Streptococcus pneumoniae invasive disease in children <6 years old
● Campylobacteriosis	● Tetanus
● Carbon monoxide poisoning	● Trichinellosis (trichinosis)
● Chikungunya fever	! Tularemia
☎ Chikungunya fever, locally acquired	☎ Typhoid Fever (Salmonella serotype Typhi)
! Cholera (Vibrio cholerae type O1)	! Typhus fever, epidemic
● Ciguatera fish poisoning	! Vaccinia disease
● Conjunctivitis in neonates <14 days old	● Varicella (chickenpox)
● Creutzfeldt-Jakob Disease (CJD)	! Venezuelan equine encephalitis
● Cryptosporidiosis	● Vibriosis (infections of Vibrio species and closely related organisms, excluding Vibrio cholerae type O1)
● Cyclosporiasis	! Viral hemorrhagic fevers
● Dengue fever	● West Nile virus disease
☎ Dengue fever, locally acquired	! Yellow Fever
! Diphtheria	Hepatitis (viral) (305)470-5536(Tel) (305)470-5533(Fax)
● Eastern equine encephalitis	☎ Hepatitis A
● Ehrlichiosis/anaplasmosis	● Hepatitis B, C, D, E, and G
● Escherichia coli infection, Shiga toxin-producing	● Hepatitis B surface antigen in pregnant women or children <2 years old
● Giardiasis, acute	HIV/AIDS (305)470-6953(Tel) (No Fax Reporting)
! Glanders	+ Acquired Immune Deficiency Syndrome (AIDS)
! Haemophilus influenzae invasive disease in children <5 years old	+ Human immunodeficiency virus (HIV) infection
● Hansen's disease (leprosy)	● HIV, exposed infants <18 months old born to an HIV-infected woman
☎ Hantavirus infection	● Lead Poisoning (305)470-6877(Tel) (305)470-5533 (Fax)
☎ Hemolytic uremic syndrome (HUS)	STD (305)575-5430(Tel) (305)575-3812(Fax) (Sexually Transmitted Diseases)
☎ Herpes B virus, possible exposure	● Chancroid
! Influenza A, novel or pandemic strains	● Chlamydia
☎ Influenza-associated pediatric mortality in children < 18 yrs old	● Gonorrhea
● Legionellosis	● Granuloma Inguinale
● Leptospirosis	● Herpes Simplex Virus (HSV) in infants < 60 days old with disseminated infection and liver involvement; encephalitis; and infections limited to skin, eyes and mouth; anogenital HSV in children < 12 years old
☎ Listeriosis	● Human Papillomavirus (HPV), associated laryngeal papillomas or recurrent respiratory papillomatosis in children < 6 years old; anogenital papillomas in children < 12 yrs old
● Lyme Disease	● Lymphogranuloma venereum (LGV)
● Malaria	● Syphilis
! Measles (rubeola)	☎ Syphilis in pregnant women and neonates
! Melioidosis	● Tuberculosis (TB) (305)575-5415(Tel) (305)575-3804(Fax)
● Meningitis, bacterial or mycotic	! Report immediately 24/7 by phone upon initial suspicion or laboratory test order
! Meningococcal disease	☎ Report immediately 24/7 by phone
● Mercury poisoning	● Report next business day
● Mumps	+ Other reporting timeframe
+ Neonatal abstinence syndrome (NAS)	
☎ Neurotoxic shellfish poisoning	
☎ Pertussis	
● Pesticide-related illness and injury, acute	
! Plague	
! Poliomyelitis	
● Psittacosis (ornithosis)	
● Q Fever	
☎ Rabies, animal or human	
! Rabies, possible exposure	

*Section 381.0031 (2), Florida Statutes (F.S.), provides that "Any practitioner licensed in this state to practice medicine, osteopathic medicine, chiropractic medicine, naturopathy, or veterinary medicine; any hospital licensed under part 1 of chapter 395; or any laboratory licensed under chapter 483 that diagnoses or suspects the existence of a disease of public health significance shall immediately report the fact to the Department of Health." Florida's county health departments serve as the Department's representative in this reporting requirement. Furthermore, Section 381.0031 (4), F.S. provides that "The department shall periodically issue a list of infectious or noninfectious diseases determined by it to be a threat to public health and therefore of significance to public health and shall furnish a copy of the list to the practitioners..."

You are an invaluable part of Florida's disease surveillance system: For more information, please call the Florida Department of Health in Miami-Dade County, Epidemiology, Disease Control and Immunization Services at (305) 470-5660. Visit www.dadehealth.org.

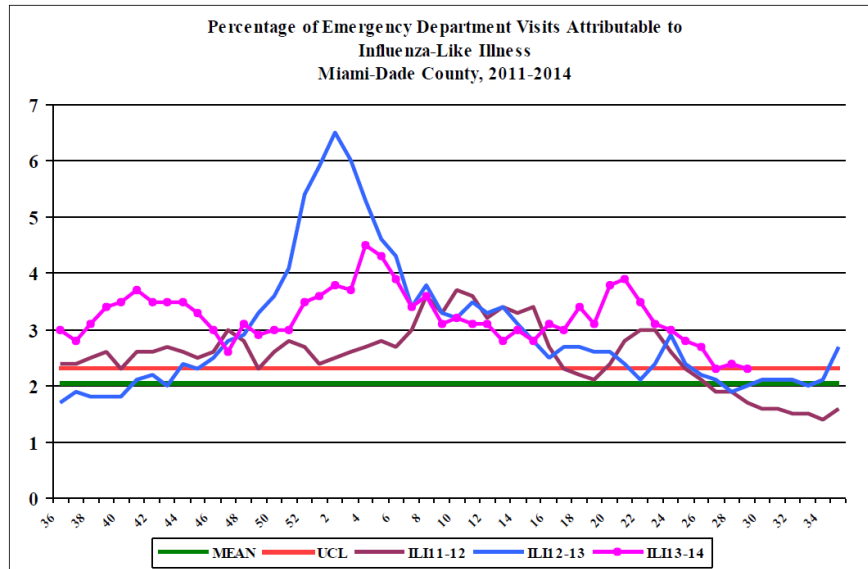


EPI Monthly Report

Florida Department of Health in Miami-Dade County

WWW.DADEHEALTH.ORG

Influenza-Like-Illness, All Age



During this period, there were 22,717 ED visits; among them 520 (2.3%) were ILI. At the same week of last year, 2.0% of ED visits were ILI.

PARTICIPATE IN INFLUENZA SENTINEL PROVIDER SURVEILLANCE

Florida Department of Health in Miami-Dade County **NEEDS** Influenza Sentinel Providers!

Sentinel providers are key to the success of the Florida Department of Health's Influenza Surveillance System. Data reported by sentinel providers gives a picture of the influenza virus and ILI activity in the U.S. and Florida which can be used to guide prevention and control activities, vaccine strain selection, and patient care.

- Providers of any specialty, in any type of practice, are eligible to be sentinel providers.
- Most providers report that it takes **less than 30 minutes a week** to compile and report data on the total number of patients seen and the number of patients seen with influenza-like illness.
- Sentinel providers can submit specimens from a subset of patients to the state laboratory for virus isolation **free of charge**.

For more information, please contact

Lakisha Thomas at 305-470-5660.

TO REPORT ANY DISEASE AND FOR INFORMATION CALL: Epidemiology, Disease Control & Immunization Services

- Childhood Lead Poisoning
- Prevention Program305-470-6877
- Hepatitis305-470-5536
- Immunizations or outbreaks305-470-5660
- HIV/AIDS Program305-470-6999
- STD Program305-575-5430
- Tuberculosis Program305-575-5415
- Immunization Service305-470-5660
- To make an appointment.....786-845-0550

About the Epi Monthly Report

The Epi Monthly Report is a publication of the Florida Department of Health in Miami-Dade County: Epidemiology, Disease Control & Immunization Services. The publication serves a primary audience of physicians, nurses, and public health professionals. Articles published in the Epi Monthly Report may focus on quantitative research and analysis, program updates, field investigations, or provider education. For more information or to submit an article, contact Kathleen Ochipa at (305) 470-6918.



EPI Monthly Report

Florida Department of Health in Miami-Dade County

WWW.DADEHEALTH.ORG



Miami-Dade County Monthly Report Select Reportable Disease/Conditions June 2014

Diseases/Conditions	2014 Current Month	2014 Year to Date	2013 Year to Date	2012 Year to Date
HIV/AIDS				
AIDS*	86	342	407	264
HIV	126	691	766	536
STD				
Infectious Syphilis*	43	169	164	162
Chlamydia*	847	4821	5041	4630
Gonorrhea*	189	993	1209	1202
TB				
Tuberculosis**	8	62	63	41
Epidemiology, Disease Control & Immunization Services				
Epidemiology				
Campylobacteriosis	40	179	137	150
Ciguatera Poisoning	2	9	9	3
Cryptosporidiosis	1	12	9	12
Cyclosporiasis	0	0	1	1
Dengue Fever	1	8	13	5
Escherichia coli, Shiga Toxin-Producing	0	4	2	3
E. coli, Non-O157	0	0	0	0
Encephalitis, West Nile Virus	0	0	0	0
Giardiasis, Acute	22	110	111	97
Influenza Novel Strain	0	0	0	0
Influenza, Pediatric Death	0	1	1	2
Legionellosis	0	8	14	7
Leptospirosis	0	0	0	0
Listeriosis	0	2	1	1
Lyme disease	1	2	1	2
Malaria	2	3	5	5
Meningitis (except aseptic)	2	13	16	8
Meningococcal Disease	2	6	11	9
Salmonella serotype Typhi (Typhoid Fever)	0	1	1	2
Salmonellosis	55	243	232	192
Shigellosis	96	532	22	21
Streptococcus pneumoniae, Drug Resistant	1	35	57	41
Toxoplasmosis	0	0	0	0
Vibriosis	0	3	5	3
West Nile Fever	0	0	0	0
Immunization Preventable Diseases				
Measles	0	0	0	0
Mumps	0	0	0	1
Pertussis	4	16	27	32
Rubella	0	0	0	0
Tetanus	0	0	0	0
Varicella	1	24	43	29
Hepatitis				
Hepatitis A	2	15	14	15
Hepatitis B (Acute)	0	6	8	11
Lead				
Lead Poisoning	7	30	50	38

*Data is provisional at the county level and is subject to edit checks by state and federal agencies.

** Data on tuberculosis are provisional at the county level.