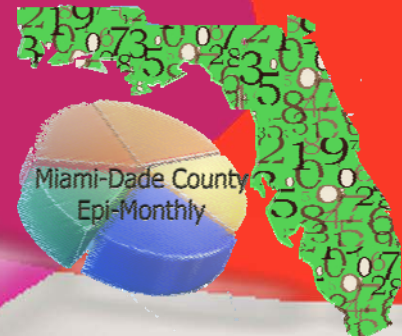


MIAMI-DADE COUNTY HEALTH DEPARTMENT

# EPI MONTHLY REPORT



## H1N1 Vaccine Outreach Initiative Miami Dade County Health Department

*Pamela Leone, MPH*

On October 19, 2009, the Miami-Dade County Health Department (MDCHD) began a mass vaccination campaign to prevent further spread of 2009 H1N1 influenza among community residents and visitors. MDCHD arranged special clinic hours for the convenience of the public to receive their free 2009 H1N1 influenza vaccine. In addition to utilizing our clinics throughout the county as points of distribution, the Miami-Dade County Health Department has been exploring various outreach initiatives to maximize community awareness and vaccine accessibility.

Given Miami-Dade's large geographical size and diversity, it is important to offer the public various options to access health services. Hence, the MDCHD has been reaching out to the community through different venues. Outreach activities include educating the public on how to prevent the spread of influenza. In this endeavor, we have utilized education and advertisement measures such as creat-

ing influenza and vaccine brochures that address the community's concerns as identified through different discussion forums. Moreover, the MDCHD has held town hall meetings throughout the community and published advertisements about our points of distribution in local newspapers.

Our 2009 H1N1 vaccination outreach activities have ranged in size from small to large or mega points of distribution with diverse staffing needs according to the size of its expected audience. In this campaign, no outreach activity has been too small, and the MDCHD welcomes community requests for vaccination fairs and activities. Currently, we have initiated an "H1N1 mobile-clinic" where a convenient location is chosen to serve the public with the H1N1 flu vaccine. The objective is to be out in the field reaching the community in innovative ways, providing information and administering H1N1 flu vaccines while making a positive

### Inside this issue:

*H1N1 Vaccine Outreach Initiative, Miami Dade County Health Department*

1

*H1N1 Vaccine Outreach Initiative, Miami Dade County Health Department*

2

*Selected Notifiable Disease Reports, Historical data, January 2010*

3

*EDC-IS Influenza/Respiratory Illness Surveillance Report*

4

*Monthly Report, Selected Reportable Diseases/ Conditions in January 2010*

5

*Fermin Leguen MD, MPH  
Chief Physician, Miami-Dade County Health Department  
Epidemiology, Disease Control & Immunization Services  
8600 NW 17th Street  
Suite 200  
Miami, Florida 33126*

**Miami-Dade County  
HEALTH DEPARTMENT**  
[www.mdadhealth.org](http://www.mdadhealth.org)



impact.

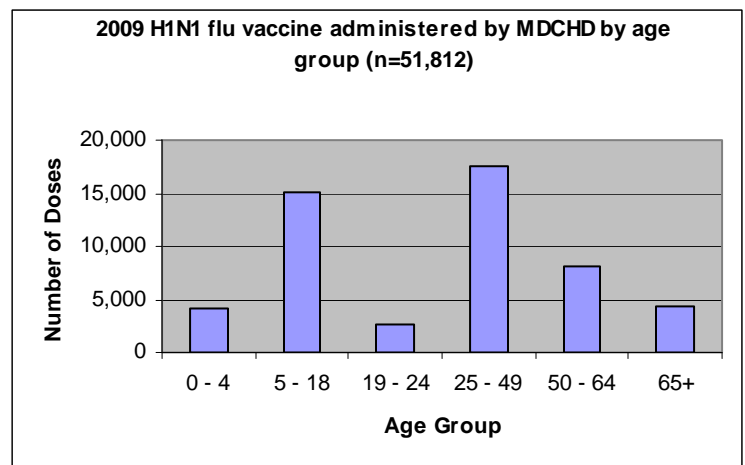
Research published by the National Library of Medicine states that “Effective outreach is driven by clearly defined objectives, which follow from understanding information needs. If a meaningful assessment of needs is not accomplished, then meaningful objectives will not be defined, and imagined outcomes may not be realized” (Rambo et al, 2001). This principle is one which the MDCHD has kept in mind throughout the entire 2009 H1N1 vaccination campaign which drove the initiative to extend our outreach by other means. For example, by implementing the “H1N1 mobile-clinic” at various locations in the county, our outreach teams have been able to bring awareness and clarity to many people who were skeptical about the facts of H1N1. MDCHD’s points of distribution are located in a diverse array of settings such as universities, community centers, senior centers, churches, malls, Women, Infant and Child (WIC) centers, drug treatment centers, and state prisons (Table1). These outreach initiatives, combined with our MDCHD health clinics, have led to the vaccination of over 50,000 residents and visitors (Table 2). We are proud to promote and protect the health of our community through prevention for a healthier tomorrow.

*Rambo, N., Zenan, J., Alpi, K., Burroughs, C., Cahn, M., & Rankin, J. (2001). Public health outreach forum: Lessons learned. Bulletin of the Medical Library Association, 89 (4), 403-406.*

**Table 1. H1N1 Outreach Activity, Miami Dade County**

H1N1 Outreach Activities		
Location	Number of Events	Population Served
Schools	165	14,867
Town Hall Meetings	23	1,332
State Prisons	4	2,117
Health Fairs	15	3,750
Malls	14	1,519
Community Presentations	24	1,680
<b>Total</b>	<b>245</b>	<b>25,265</b>

**Table 2.**



# February 2010...

American Heart Month

International Prenatal Infection  
Prevention Month

National Children's Dental Health  
Month

National Wise Health Consumer  
Month



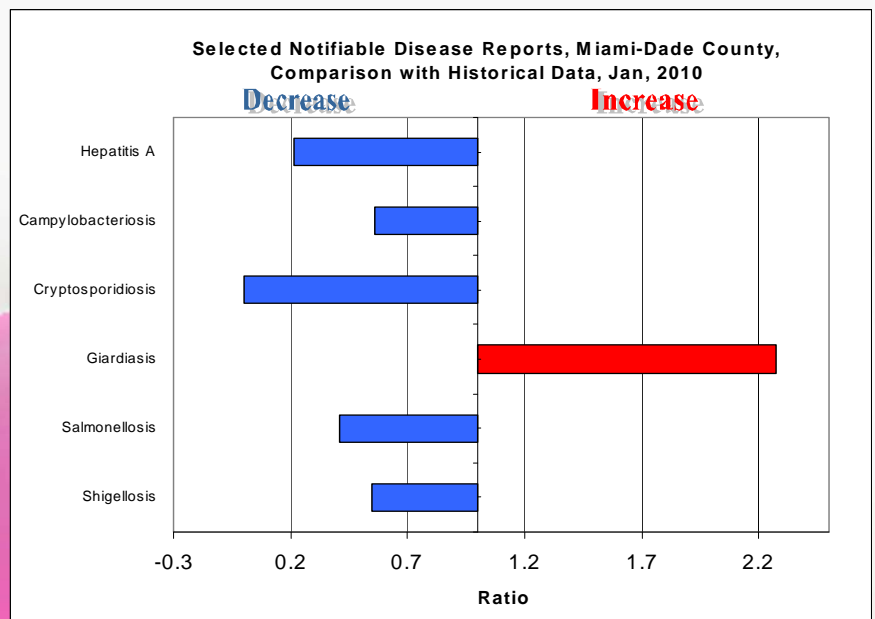
## Topic of the Month: Live a Healthy Lifestyle

*Do you practice a healthy lifestyle?*

- Eat a healthy diet
- Maintain a healthy weight
- Exercise Regularly
- Don't smoke
- Limit alcohol use
- Have your cholesterol checked
- Monitor your blood pressure
- Talk with your health care provider

**TO REPORT ANY DISEASE AND FOR  
INFORMATION CALL:  
Epidemiology, Disease Control  
& Immunization Services**

Childhood Lead Poisoning  
Prevention Program .....305-470-6877  
Hepatitis .....305-470-5536  
Immunizations or outbreaks .....305-470-5660  
HIV/AIDS Program .....305-470-6999  
STD Program .....305-325-3242  
Tuberculosis Program .....305-324-2470  
Immunization Service .....305-470-5660  
To make an appointment.....786-845-0550



**Miami-Dade County Health Department**  
**EDC-IS Influenza/Respiratory Illness**  
**Surveillance Report**

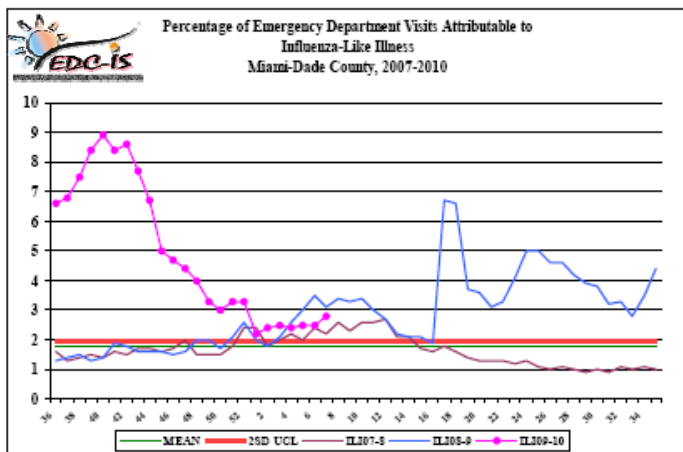


**Week 07: 02/14/2010– 02/20/2010**

Miami Dade County Health Department EDC-IS collects and analyzes weekly information on influenza activity in Miami-Dade County. On a daily basis, selected Miami-Dade County hospitals electronically transmit hospital emergency department data to the Miami-Dade County Health Department.

This data is then categorized into 10 distinct syndromes. The influenza-like illness (ILI) syndrome consists of fever with either cough or sore throat. It can also include a chief complaint of “flu”. Each week, staff will determine the percentage of all emergency department visits that fall into the ILI category.

Influenza-Like-Illness, All Age



During this period, there were 18,978 ED visits; among them 523(2.8%) were ILI. At the same week of last year, 3.1% of ED visits were ILI.

For more information, please contact  
**Erin O’Connell** at 305-470-5660.

**PARTICIPATE IN INFLUENZA**  
**SENTINEL**  
**PROVIDER SURVEILLANCE**

**The Miami-Dade County Health Department NEEDS Influenza Sentinel Providers!!**

Sentinel providers are key to the success of the Florida Department of Health’s Influenza Surveillance System. Data reported by sentinel providers gives a picture of the influenza virus and ILI activity in the U.S. and Florida which can be used to guide prevention and control activities, vaccine strain selection, and patient care.

- Providers of any specialty, in any type of practice, are eligible to be sentinel providers.
- Most providers report that it takes **less than 30 minutes a week** to compile and report data on the total number of patients seen and the number of patients seen with influenza-like illness.
- Sentinel providers can submit specimens from a subset of patients to the state laboratory for virus isolation **free of charge**.

For more information, please contact  
**Erin O’Connell** at 305-470-5660.

**About the Epi Monthly Report**

The Epi Monthly Report is a publication of the Miami-Dade County Health Department, Epidemiology, Disease Control & Immunization Services. The publication serves a primary audience of physicians, nurses, and public health professionals. Articles published in the Epi Monthly Report may focus on quantitative research and analysis, program updates, field investigations, or provider education. For more information or to submit an article, contact Lizbeth Londoño at 305-470-6918.



# Miami-Dade County Monthly Report

## Select reportable Disease/Conditions

### January 2010

Diseases/Conditions	2010 Current Month	2010 Year to Date	2009 Year to Date	2008 Year to Date
<b>HIV/AIDS</b>				
AIDS*	46	46	3	55
HIV	37	37	10	145
<b>TB</b>				
Tuberculosis**	N/A	N/A	N/A	N/A
<b>Epidemiology, Disease Control &amp; Immunization Services</b>				
<b>Epidemiology</b>				
Campylobacteriosis	7	7	6	7
Ciguatera Poisoning	0	0	3	0
Cryptosporidiosis	0	0	0	0
Cyclosporiasis	0	0	0	0
Dengue Fever	0	0	0	1
E. coli, O157:H7	0	0	0	0
E. coli, Non-O157	0	0	0	0
Encephalitis (except WNV)	0	0	0	0
Encephalitis, West Nile Virus	0	0	0	0
Giardiasis, Acute	47	47	12	6
Influenza Novel Strain	3	3	0	0
Influenza, Pediatric Death	0	0	0	0
Legionellosis	0	0	0	1
Leptospirosis	0	0	0	0
Listeriosis	0	0	0	0
Lyme disease	0	0	0	0
Malaria	3	3	0	0
Meningitis (except aseptic)	0	0	0	0
Meningococcal Disease	0	0	1	0
Salmonellosis	13	13	28	15
Shigellosis	8	8	12	1
Streptococcus pneumoniae, Drug Resistant	9	9	7	10
Toxoplasmosis	0	0	0	0
Typhoid Fever	0	0	0	0
Vibriosis	0	0	0	0
West Nile Fever	0	0	0	0
<b>Immunization Preventable Diseases</b>				
Measles	0	0	0	0
Mumps	0	0	0	0
Pertussis	0	0	1	0
Rubella	0	0	0	0
Tetanus	0	0	0	0
Varicella	3	3	4	1
<b>Hepatitis</b>				
Hepatitis A	1	1	5	3
Hepatitis B (Acute)	0	0	0	1
<b>Lead</b>				
Lead Poisoning	0	0	8	10

\*Data on AIDS are provisional at the county level and is subject to edit checks by state and federal agencies.

\*\* Data on tuberculosis are provisional at the county level.