

Epi Monthly

Florida Department of Health in Miami-Dade County

May 2021 Vol 22, Issue 5

Public Health LOOK OUT!

- June is **Alzheimer and Brain Awareness Month**. Alzheimer's disease is a degenerative brain disease that kills nerve cells resulting in the loss of memory and cognitive abilities. This month, the Alzheimer's Association is urging the public to wear purple, post photos on social media, and raise awareness about the disease by having conversations with friends, family, and co-workers. To learn more on how to address the stigma and lack of knowledge regarding Alzheimer's and other dementia, please visit, <https://www.alz.org/abam/overview.asp>.
- **International Men's Health Week** takes place June 14th-20th. The goal is to increase awareness of male health issues on a global level and encourage inter- and intra-national institutions to develop health policies and services that meet the health needs of boys and men. This week is used to educate the public about what can be done to help improve men's health while providing free and convenient health services to boys and men. To learn more about how you can participate, please visit, menshealthmonth.org !
- **National HIV Testing Day** is **June 27th**. Human Immunodeficiency Virus, HIV, is a virus that attacks the body's immune system and when left untreated can lead to AIDS (Acquired Immunodeficiency Syndrome). In 2019, Florida identified 4,584 new HIV diagnoses, highlighting the threat to public health and the importance of taking the first step in maintaining a healthy life and preventing HIV transmission. On this day, health departments and other organizations raise awareness about the importance of testing and early diagnosis. You can locate HIV counseling, testing and referral sites by visiting www.KnowYourHIVStatus.com or texting 'FLHIV' to 898211.

For the most recent information on COVID-19 in Florida please visit: <https://floridahealthcovid19.gov/>

In this Issue

Public Health Lookout	1
COVID-19 Resources and Guidance	2
Hurricane Preparedness	4
EDC-IS Influenza Respiratory Illness Surveillance Report	5
Selected Reportable Disease and Conditions for April 2021	6
What's New at DOH-Miami-Dade	7

COVID-19 vaccines are new. It's normal for people to have questions about them.



Florida Department of Health in Miami-Dade County
Epidemiology, Disease Control, and Immunization Services
1350 NW 14th St, Annex Building
Miami, FL 33125
Phone: 305-470-5660
Fax: 305-470-5533
eFax: 786-732-8714



Care for yourself one small way each day

Find new ways to safely connect with family and friends, get support, and share feelings



Take breaks to relax and unwind through yoga, music, gardening, or new hobbies



Treat yourself to healthy foods and get enough sleep



Take care of your body and get moving to lessen fatigue, anxiety, or sadness



Substance Abuse and Mental Health Services Administration
Disaster Distress Hotline: call or text 1-800-985-5990

cdc.gov/coronavirus

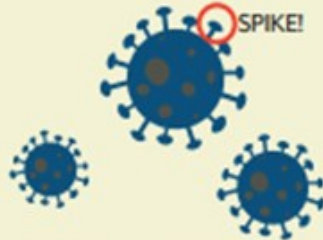
Moderna & Pfizer vaccines—how do they work?

It's important to know that scientists had a head start making these COVID-19 vaccines.



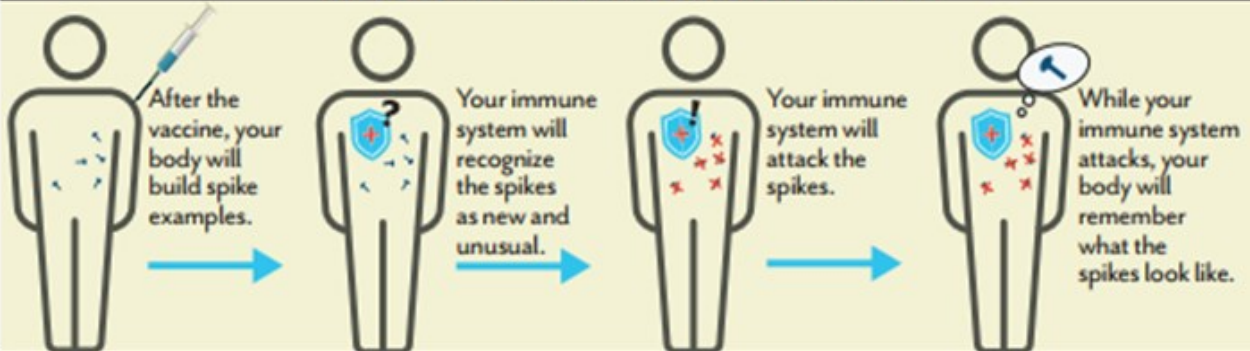
Scientists at the National Institutes of Health and the University of Pennsylvania started working on these vaccines after previous coronavirus outbreaks.

They isolated one part of the virus—the spike. This would help them make the vaccines.



These COVID-19 vaccines are mRNA vaccines. Basically, they're instructions for bodies to make examples of COVID-19 spikes.

HERE'S HOW THE VACCINE WORKS IN YOUR BODY



THE SECOND SHOT HELPS THE VACCINE BECOME EVEN MORE EFFECTIVE.



Without vaccine, your immune system won't be fast enough to recognize that the COVID-19 virus is bad. While your immune system desperately works to protect your body, the virus has plenty of time to spread and make you sick.



With vaccine, your body already knows to be on the lookout for the spike. If the virus enters your body, your immune system quickly gets to work destroying the virus.



You won't get sick when your body builds spike examples because the spikes aren't virus. The vaccine does NOT involve injecting you with the COVID-19 virus and it does NOT change your DNA or your genetic code.

After vaccine, you might have some side effects—they will go away in a few days. Side effects are normal signs your body is building protection. Side effects include:

- Pain and swelling on the arm with the shot.
- Fever, chills, tiredness and headache.



Visit [MyVaccine.FL.gov](https://www.myvaccine.fl.gov) for more information or to pre-register for vaccine at state-supported sites in your area.

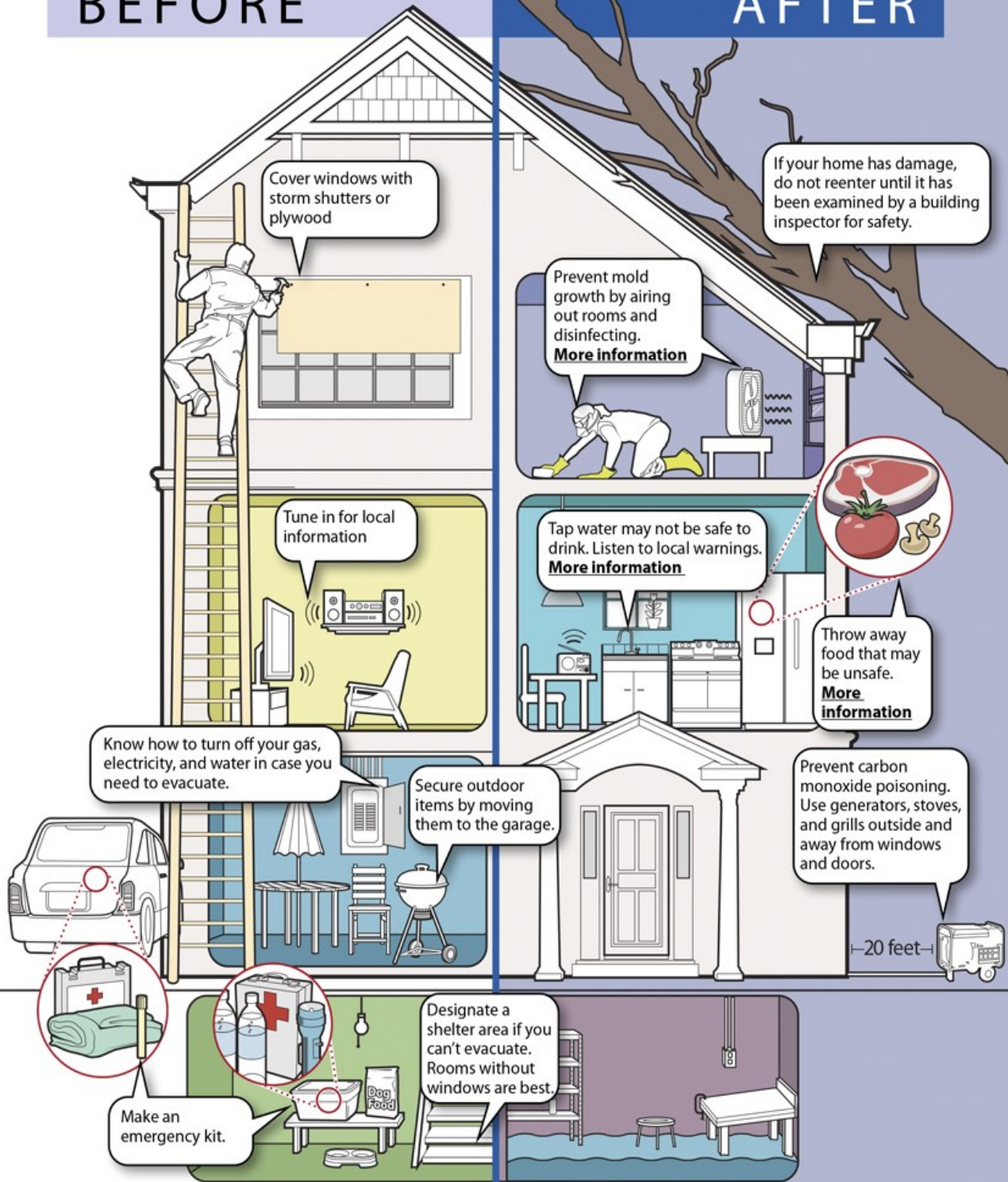
Florida
HEALTH

Florida Health Office of Communications 5-05-21

Be ready! Hurricanes

BEFORE

AFTER



Public Health Preparedness and Response
Centers for Disease Control and Prevention

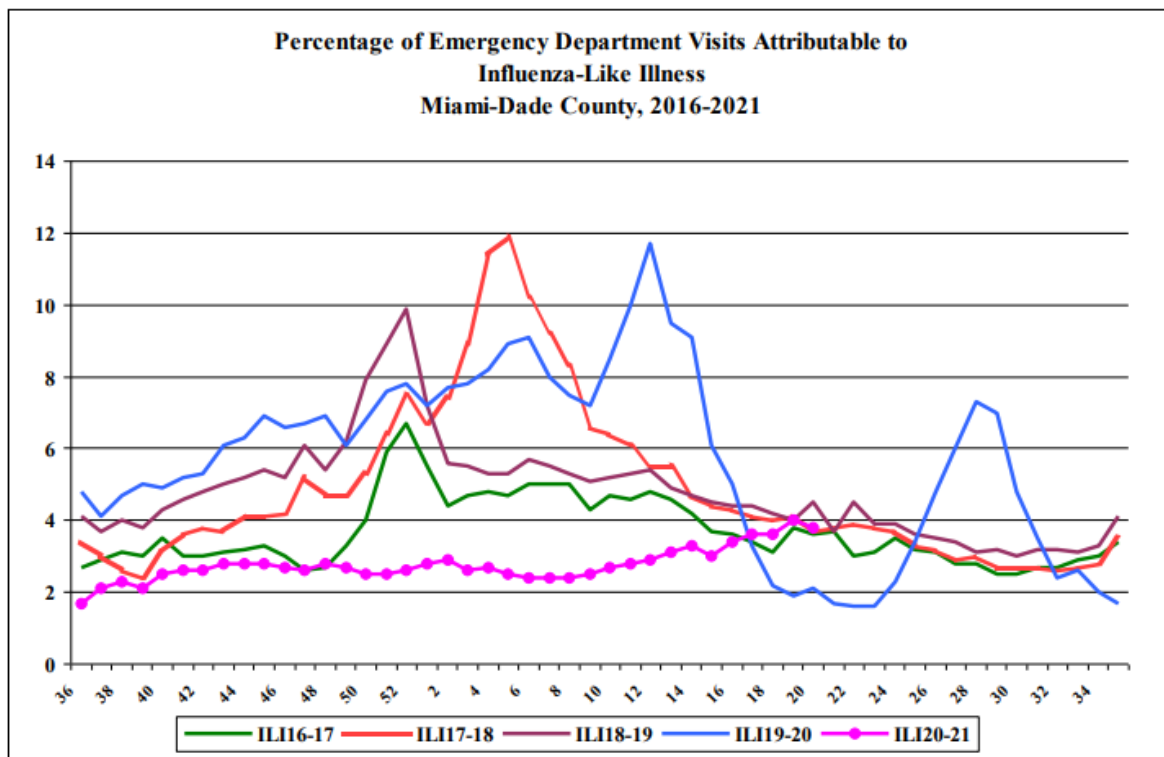
CS283357

Florida Department of Health in Miami-Dade County Epidemiology, Disease Control and Immunization Services

Influenza Like Illness Surveillance Report

On a daily basis, all of Miami-Dade County's emergency department (ED) hospitals electronically transmit ED data to the Florida Department of Health. This data is then categorized into 11 distinct syndromes. The influenza-like illness (ILI) syndrome consists of fever with either cough or sore throat. It can also include a chief complaint of "flu" or "ILI". This season's 2020-2021 data is compared to the previous 4 influenza seasons (2016-2017, 2017-2018, 2018-2019, 2019-2020).

Influenza-Like-Illness, All Age



Across all ages, there were 32,882 ED visits; among them 1,263 (3.8%) were ILI. During the same week last year, 2.1% of ED visits were ILI.

PARTICIPATE IN INFLUENZA SENTINEL PROVIDER SURVEILLANCE

Florida Department of Health in Miami-Dade County NEEDS Influenza Sentinel Providers!

Sentinel providers are key to the success of the Florida Department of Health's Influenza Surveillance System. Data reported by sentinel providers gives a picture of the influenza virus and ILI activity in the U.S. and Florida which can be used to guide prevention and control activities, vaccine strain selection, and patient care.

- Providers of any specialty, in any type of practice, are eligible to be sentinel providers.
- Most providers report that it takes **less than 30 minutes a week** to compile and report data on the total number of patients seen and the number of patients seen with influenza-like illness.
- Sentinel providers can submit specimens from a subset of patients to the state laboratory for virus isolation **free of charge**.

For more information, please contact
Stephanie Calle at 305-470-5660.



Miami-Dade County Monthly Report Select Reportable Disease/Conditions April 2021

Diseases/Conditions	2021 Current Month	2021 Year to Date	2020 Year to Date	2019 Year to Date
HIV/AIDS				
AIDS*	34	134	123	166
HIV	124	422	409	539
STD				
Infectious Syphilis*	53	177	172	159
Chlamydia*	1245	4663	4192	4887
Gonorrhea*	504	2068	1420	1503
TB				
Tuberculosis**	6	34	29	27
Epidemiology, Disease Control & Immunization Services				
Epidemiology				
Campylobacteriosis	51	162	182	272
Chikungunya Fever	0	0	0	0
Ciguatera Poisoning	0	0	4	17
Cryptosporidiosis	1	13	10	19
Cyclosporiasis	0	1	1	1
Dengue Fever	0	1	7	0
Escherichia coli, Shiga Toxin-Producing	8	19	28	34
Encephalitis, West Nile Virus	0	0	0	0
Giardiasis, Acute	10	34	40	53
Influenza, Pediatric Death	0	0	0	0
Legionellosis	8	15	9	16
Leptospirosis	1	1	0	0
Listeriosis	2	2	3	0
Lyme disease	0	0	3	0
Malaria	1	1	2	2
Meningitis (except aseptic)	2	5	4	2
Meningococcal Disease	1	2	1	2
Salmonella serotype Typhi (Typhoid Fever)	0	0	0	1
Salmonellosis	46	167	178	186
Shigellosis	5	21	59	92
Streptococcus Pneumoniae, invasive disease	3	8	31	0
Vibriosis	0	0	2	4
West Nile Fever	0	0	0	0
Zika Virus (non-congenital)	0	0	0	10
Immunization Preventable Diseases				
Measles	0	0	0	0
Mumps	1	2	1	9
Pertussis	0	0	7	9
Rubella	0	0	0	0
Tetanus	0	0	0	0
Varicella	2	3	24	40
Hepatitis				
Hepatitis A	0	3	8	14
Hepatitis B (Acute)	1	4	17	9
Healthy Homes				
Lead Poisoning	7	28	33	46

*Data is provisional at the county level and is subject to edit checks by state and federal agencies.

** Data on tuberculosis are provisional at the county level.

Data on EDC-IS includes Confirmed and Probable cases.

What's New at DOH-Miami-Dade:

- To find the nearest vaccine site near you by county and city please visit: floridahealthcovid19.gov
- To pre-register for a vaccine and receive updates visit: myvaccine.fl.gov. Qualified individuals will receive notifications when vaccines are available in their area and receive assistance in scheduling an appointment.
- For more information on vaccines in Florida including the number of people vaccinated and updates on availability and prioritization please visit: floridahealthcovid19.gov



National Nurses Week May 6th to May 12th

YEAR OF THE NURSE

2020 2021

EXCEL • LEAD • INNOVATE



ANA  ENTERPRISE

Celebrating Nurses Day May 7th, 2021

To report diseases and for information, call EDC-IS at:

Childhood Lead Poisoning Prevention Program	305-470-6877
Epidemiology and Disease Surveillance	305-470-5660
Hepatitis Program	305-470-5536
HIV/AIDS Program	305-470-6999
Immunization Services	305-470-5660
STD Program	305-575-5430
Tuberculosis Program	305-575-5415
Appointment Line	786-845-0550

About the Epi Monthly Report

The Epi Monthly Report is a publication of the Florida Department of Health in Miami-Dade County: Epidemiology, Disease Control & Immunization Services. The publication serves a primary audience of physicians, nurses, and public health professionals. Articles published in the Epi Monthly Report may focus on quantitative research and analysis, program updates, field investigations, or provider education. For more information or to submit an article, please contact Yoselin Garcia at (786) 582-2266 or Yoselin.Garcia@flhealth.gov.

