



Public Health LOOK OUT!

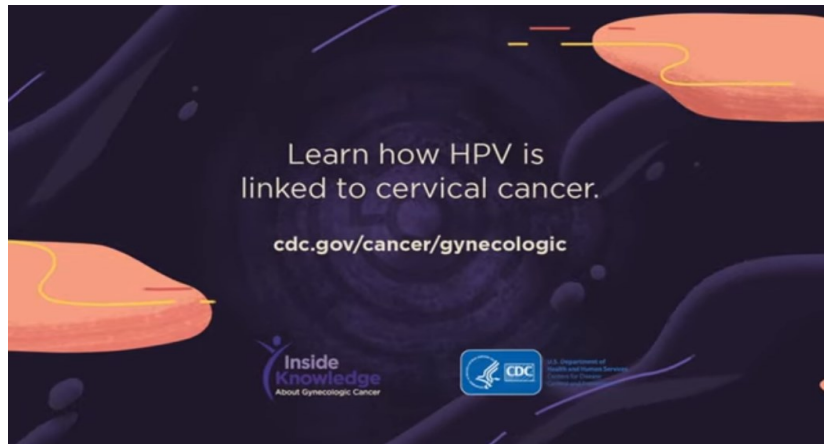
- February is [American Heart Month](#), a time to raise awareness about heart disease and how to maintain a healthy heart. This year the focus is on hypertension (high blood pressure), a leading risk factor for heart disease. Healthcare workers and partners are encouraged to use available resources on evidence-based hypertension control strategies to help bring awareness and save lives.
- February 4th is [World Cancer Day](#). Although cancer rates have been on the decline for the past few years, it is still estimated that about 40% of individuals in the United States will get cancer at some point in their lifetime. However, there are steps that can be taken to help prevent cancer such as maintaining a healthy lifestyle, supporting a healthy environment, and ensuring access to screening tests.
- February is also [Teen Dating Violence Awareness and Prevention Month](#). Teens who are experiencing violence in their relationships are more likely to experience long term health consequences. This month it is important to help raise awareness and help provide support services to victims, families, and communities and promote safe and healthy relationships.

For the most recent information on COVID-19 in Florida please visit:

<https://floridahealthcovid19.gov/>

In this Issue

Public Health Lookout	1
COVID-19 Resources and Guidance	2
EDC-IS Influenza Respiratory Illness Surveillance Report	4
Selected Reportable Disease and Conditions for December 2020	5
What's New at DOH-Miami-Dade	6



Click the image to the left to watch the video.

WE HAVE A NEW ADDRESS!

Florida Department of Health in Miami-Dade County
 Epidemiology, Disease Control, and Immunization Services
 1350 NW 14th St, Annex Building
 Miami, FL 33125
 Phone: 305-470-5660
 Fax: 305-470-5533
 eFax: 786-732-8714





Why Get Vaccinated?

To Protect Yourself, Your Coworkers, Your Patients, Your Family, and Your Community

- Building defenses against COVID-19 in this facility and in your community is a team effort. And **you** are a key part of that defense.
- Getting the COVID-19 vaccine adds **one more layer of protection** for you, your coworkers, patients, and family.



Here are ways you can **build people's confidence** in the new COVID-19 vaccines in your facility, your community, and at home:

- ✓ **Get vaccinated** and enroll in the **v-safe** text messaging program to help CDC monitor vaccine safety.
- ✓ **Tell others why** you are getting vaccinated and encourage them to get vaccinated.
- ✓ **Learn how to have conversations** about COVID-19 vaccine with coworkers, family, and friends.



12/09/20

www.cdc.gov/coronavirus/vaccines



Getting 'Back to Normal' Is Going to Take **All of Our Tools**

If we use all the tools we have, we stand the best chance of getting our families, communities, schools, and workplaces "back to normal" sooner:

Get vaccinated.



Wear a mask.



Stay 6 feet from others,
and avoid crowds.



Wash
hands often.



12/09/20

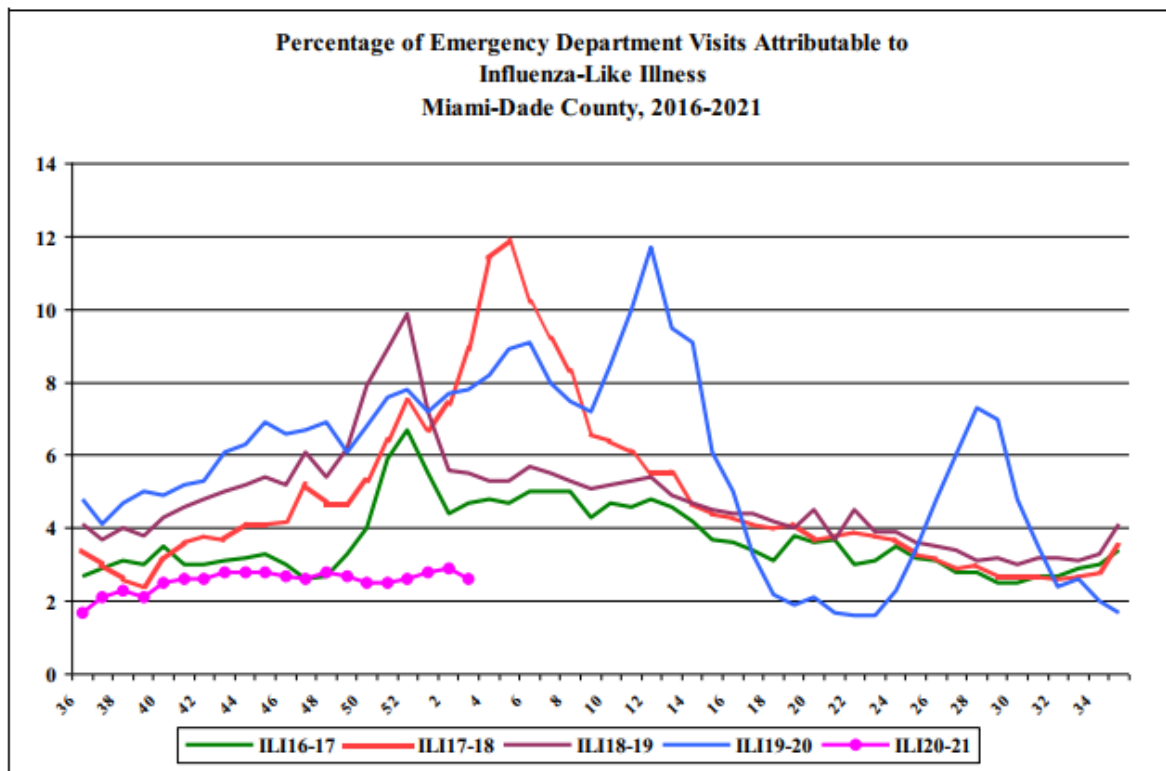
www.cdc.gov/coronavirus/vaccines

Florida Department of Health in Miami-Dade County Epidemiology, Disease Control and Immunization Services

Influenza Like Illness Surveillance Report

On a daily basis, all of Miami-Dade County's emergency department (ED) hospitals electronically transmit ED data to the Florida Department of Health. This data is then categorized into 11 distinct syndromes. The influenza-like illness (ILI) syndrome consists of fever with either cough or sore throat. It can also include a chief complaint of "flu" or "ILI". This season's 2020-2021 data is compared to the previous 4 influenza seasons (2016-2017, 2017-2018, 2018-2019, 2019-2020).

Influenza-Like-Illness, All Age



Across all ages, there were 30,767 ED visits; among them 813 (2.6%) were ILI. During the same week last year, 7.8% of ED visits were ILI.

PARTICIPATE IN INFLUENZA SENTINEL PROVIDER SURVEILLANCE

Florida Department of Health in Miami-Dade County NEEDS Influenza Sentinel Providers!

Sentinel providers are key to the success of the Florida Department of Health's Influenza Surveillance System. Data reported by sentinel providers gives a picture of the influenza virus and ILI activity in the U.S. and Florida which can be used to guide prevention and control activities, vaccine strain selection, and patient care.

- Providers of any specialty, in any type of practice, are eligible to be sentinel providers.
- Most providers report that it takes **less than 30 minutes a week** to compile and report data on the total number of patients seen and the number of patients seen with influenza-like illness.
- Sentinel providers can submit specimens from a subset of patients to the state laboratory for virus isolation **free of charge**.

For more information, please contact
Stephanie Calle at 305-470-5660.



Miami-Dade County Monthly Report Select Reportable Disease/Conditions December 2020

Diseases/Conditions	2020 Current Month	2020 Year to Date	2019 Year to Date	2018 Year to Date
HIV/AIDS				
AIDS*	38	333	420	418
HIV	94	967	1327	1288
STD				
Infectious Syphilis*	55	504	401	465
Chlamydia*	1045	11763	15019	13376
Gonorrhea*	527	4884	4857	4245
TB				
Tuberculosis**	8	72	118	125
Epidemiology, Disease Control & Immunization Services				
Epidemiology				
Campylobacteriosis	58	572	861	796
Chikungunya Fever	0	0	2	1
Ciguatera Poisoning	0	11	42	36
Cryptosporidiosis	6	33	76	45
Cyclosporiasis	0	9	31	3
Dengue Fever	6	26	233	45
Escherichia coli, Shiga Toxin-Producing	14	57	163	175
Encephalitis, West Nile Virus	0	0	0	0
Giardiasis, Acute	7	114	181	188
Influenza, Pediatric Death	0	0	2	1
Legionellosis	5	35	52	64
Leptospirosis	0	0	0	1
Listeriosis	0	9	6	8
Lyme disease	0	3	5	7
Malaria	0	2	5	11
Meningitis (except aseptic)	5	10	9	11
Meningococcal Disease	2	4	3	0
Salmonella serotype Typhi (Typhoid Fever)	0	0	3	4
Salmonellosis	127	916	1028	901
Shigellosis	12	106	265	291
Streptococcus Pneumoniae, invasive disease	4	49	21	16
Vibriosis	2	18	22	23
West Nile Fever	3	30	0	1
Zika Virus (non-congenital)	0	0	24	34
Immunization Preventable Diseases				
Measles	0	0	0	3
Mumps	0	2	61	12
Pertussis	0	9	36	21
Rubella	0	0	0	0
Tetanus	0	0	0	0
Varicella	0	29	161	89
Hepatitis				
Hepatitis A	1	14	42	18
Hepatitis B (Acute)	2	40	32	47
Healthy Homes				
Lead Poisoning	7	89	136	185

*Data is provisional at the county level and is subject to edit checks by state and federal agencies.

** Data on tuberculosis are provisional at the county level.

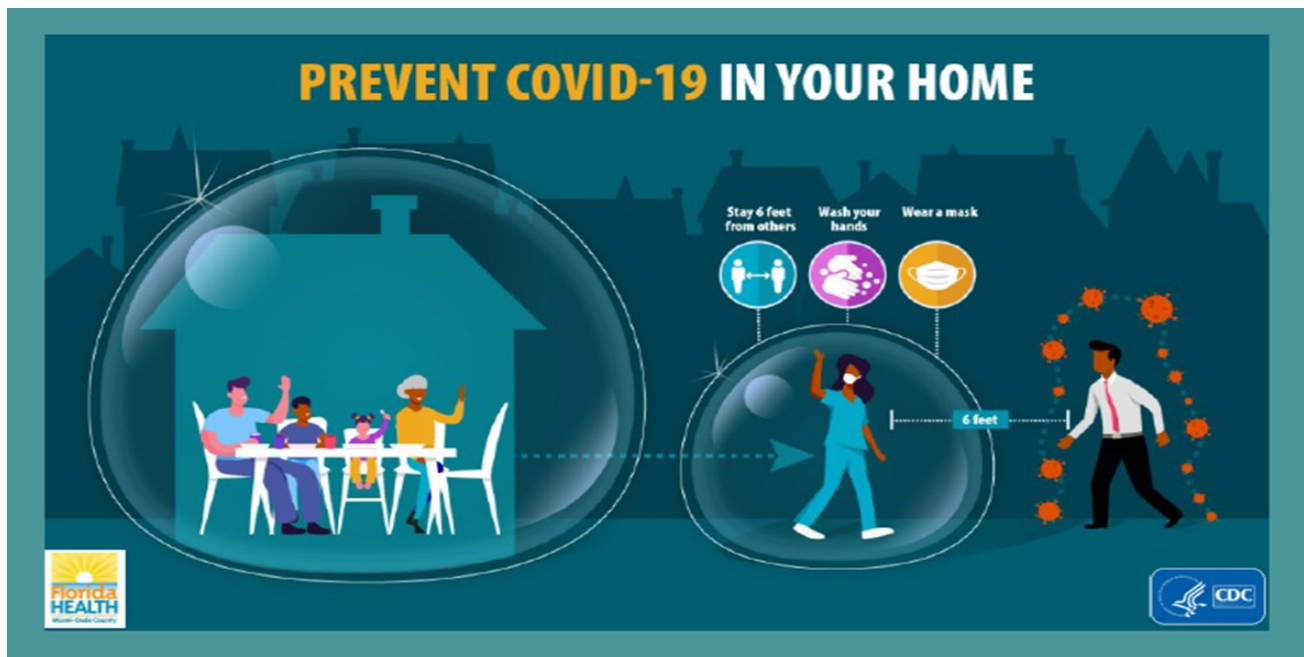
Data on EDC-IS includes Confirmed and Probable cases.

What's New at DOH-Miami-Dade:

- Florida launched a statewide preregistration system for scheduling COVID-19 vaccine appointments for individuals 65 and older and frontline health care workers. Individuals that are registered on myvaccine.fl.gov will receive notification when vaccines are available in their area and receive assistance in scheduling an appointment.
- DOH-Miami-Dade and the Miami-Dade Ryan White Program is hosting an "Ending the HIV Epidemic (EHE)" virtual conference on February 18-19, 2021. To attend the two day event register at <https://attendee.gotowebinar.com/register/5889889588628053259>.

To report diseases and for information, call EDC-IS at:

Childhood Lead Poisoning Prevention Program	305-470-6877
Epidemiology and Disease Surveillance	305-470-5660
Hepatitis Program	305-470-5536
HIV/AIDS Program	305-470-6999
Immunization Services	305-470-5660
STD Program	305-575-5430
Tuberculosis Program	305-575-5415
Appointment Line	786-845-0550



About the Epi Monthly Report

The Epi Monthly Report is a publication of the Florida Department of Health in Miami-Dade County: Epidemiology, Disease Control & Immunization Services. The publication serves a primary audience of physicians, nurses, and public health professionals. Articles published in the Epi Monthly Report may focus on quantitative research and analysis, program updates, field investigations, or provider education. For more information or to submit an article, please contact Vanessa Villamil at 305-470-5643 or vanessa.villamil@flhealth.gov.

