

HIV/AIDS AMONG SENIORS IN FLORIDA AND MIAMI-DADE 2010

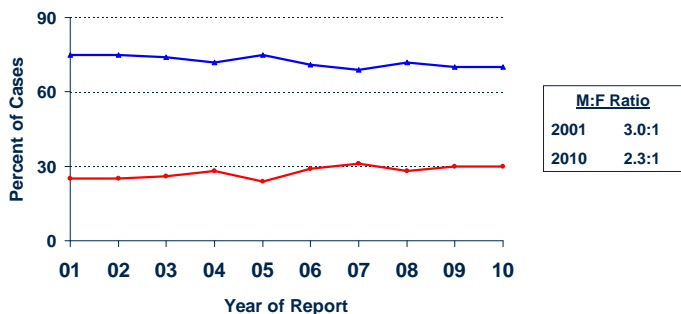
FLORIDA

- ⚡ In 2010, those aged 50+ made up 28% of AIDS cases and 21% of HIV cases reported in Florida.
- ⚡ Through 2010, persons at the current age 50+ accounted for 36% of all people living with HIV/AIDS in Florida.
- ⚡ Of the 34,393 living HIV/AIDS cases reported among persons aged 50 and older in Florida through 2010,
 - Males represent 73% and females represent 27%
 - Whites represents 28%, Blacks represents 30% and Hispanic represents 14%

⚡ Blood transfusion, once a common mode of transmission in this age group, has significantly declined over time. Currently, less than 1% of the reported cases among both men and women have a blood or other related risk.

RISK CATEGORY	MALE	FEMALE
MSM	55%	
IDU	13%	18%
MSM/IDU	5%	
HETERO	26%	81%
OTHER	<1%	1%

⚡ Over the past ten years, an average of 72% of newly reported AIDS cases among person 50 and older were males. Although the annual trends have remained fairly level, the proportion of males to female decreases over the past few years, yielding a male to female ratio of 2.3:1 in 2010.



⚡ Of the 1,614 HIV/AIDS cases death in 2010, more than one half (56%) were among people 50 years old and above.

MIAMI-DADE

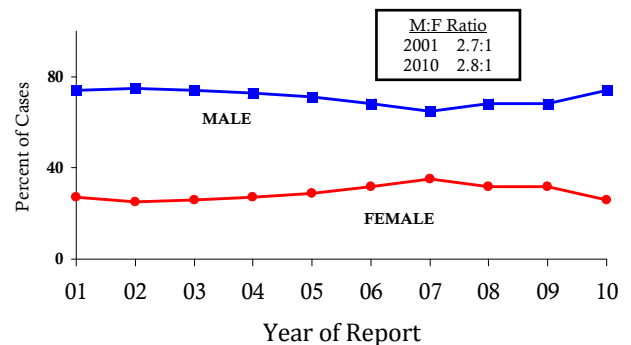
- ⚡ In 2010, those aged 50+ made up 32% of AIDS cases and 23% of HIV cases reported in Miami-Dade.
- ⚡ Through 2010, persons at the current age 50+ accounted for 40% of all people living with HIV/AIDS in Miami-Dade.
- ⚡ Of the 10,341 living HIV/AIDS cases reported among persons aged 50 and older in Florida through 2010,
 - Males represent 73% and females represent 27%
 - Whites represents 13%, Blacks represents 49% and Hispanic represents 37%

⚡ Blood transfusion, once a common mode of transmission in this age group, has significantly declined over time. Currently, less than 1% of the reported cases among both men and women have a blood or other related risk.

RISK* CATEGORY	MALE	FEMALE
MSM	59%	
IDU	11%	15%
MSM/IDU	4%	
HETERO	26%	84%
OTHER	<1%	1%

* No reported risk redistributed

⚡ The gap in the number of reported AIDS cases among males and females aged 50+ has stay the same over time. In 2001, the male to female ratio was 2.7:1 compared to 2.8:1 in 2010.



⚡ Of the 282 cases of HIV related death in 2009 in Miami-Dade according to Florida CHART, 31% were among people aged 55 years old and over.