



FLORIDA DEPARTMENT OF HEALTH IN MONROE COUNTY

Cumulative number of reported AIDS/HIV cases

Please note that as of January 2016, all HIV/AIDS data will be based on the following.

Per Bureau of HIV/AIDS:

Current HIV Infection data by year of report reflects any case meeting the CDC definition of 'HIV infection' which includes all newly reported HIV cases and newly reported AIDS cases with no previous report of HIV in Florida.

If a case is later identified as being previously diagnosed and reported from another state, the case will no longer be reflected as a Florida case and the data will be adjusted accordingly.

Data from the most recent calendar year (2015) are considered provisional and therefore should not be used to confirm or rule out an increase in newly reported cases in Florida.

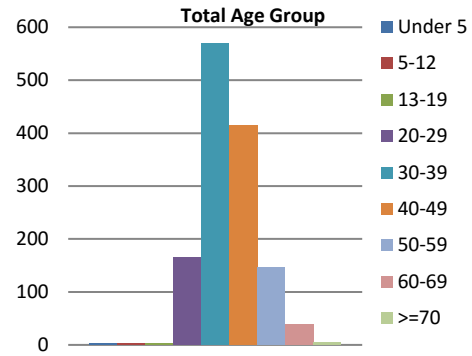
The final year-end numbers are generated in July of the following year, after duplicate cases are removed from the dataset, as is customary of HIV surveillance in the US.



FLORIDA DEPARTMENT OF HEALTH IN **MONROE COUNTY**
 Reported AIDS cases through
December 2016
 (Resume)

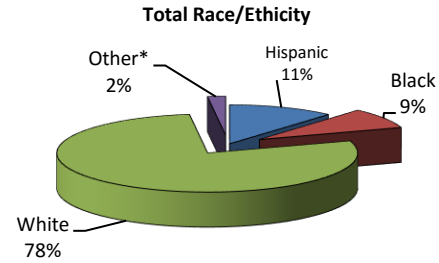
AIDS cases by age group and gender

Age Group	Female	%	Male	%	Total	%
Under 5	0	0.0%	2	0.2%	2	0.1%
5-12	1	1.1%	1	0.1%	2	0.1%
13-19	1	1.1%	2	0.2%	3	0.2%
20-29	10	10.8%	155	12.4%	165	12.3%
30-39	39	41.9%	531	42.4%	570	42.3%
40-49	25	26.9%	390	31.1%	415	30.8%
50-59	15	16.1%	132	10.5%	147	10.9%
60-69	2	2.2%	36	2.9%	38	2.8%
>=70	0	0.0%	4	0.3%	4	0.3%
Unknown	0	0.0%	0	0.0%	0	0.0%
Total	93	100%	1,253	100.0%	1,346	100%



Adult/Adolescent & Pediatric AIDS cases by race/ethnicity

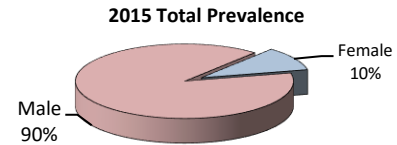
Race/ Ethnicity	Adult/Adolescent		Pediatric		Total	
	Cases	%	Cases	%	Cases	%
Hispanic	154	11.5%	0	0.0%	154	11.4%
Black	115	8.6%	0	0.0%	115	8.5%
White	1,047	78.0%	4	100.0%	1,051	78.1%
Other*	26	1.9%	0	0.0%	26	1.9%
Unknown	0	0.0%	0	0.0%	0	0.0%
Total	1,342	100%	4	100%	1,346	100%



* Other Includes: American Indian/Alaska Native, Asian, Native Hawaii/Pacific Islander, Legacy Asian, Multi-Race

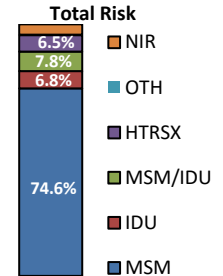
AIDS and Total Prevalence [PLWHA] through 2015, as of June 2016

2015 PLWHA	AIDS Prevalence		Total PLWHA	
	Cases	%	Cases	%
Female	44	10.6%	67	10.4%
Male	373	89.4%	577	89.6%
Total	417	100%	644	100%



Adult AIDS Cases by exposure category

Adult Exposure Category	Adult Adolescent					
	Female	%	Male	%	Total	%
Adult male-to-male sexual contact [MSM]		0.0%	1,001	80.1%	1,001	74.6%
Adult injection drug use [IDU]	28	30.4%	63	5.0%	91	6.8%
Adult MSM & IDU		0.0%	105	8.4%	105	7.8%
Adult heterosexual contact [HTRSX]	55	59.8%	32	2.6%	87	6.5%
Adult other risk*	1	1.1%	2	0.2%	3	0.2%
Adult no risk factor reported [NRR]	8	8.7%	47	3.8%	55	4.1%
Total	92	100%	1,250	100%	1,342	100%



* Other risk includes: Adult receiving clotting factor, Hemophiliac, Perinatal exposure w/HIV at age 13+ years

Pediatric AIDS Cases by exposure category

Pediatric Exposure Category	Pediatric					
	Female	%	Male	%	Total	%
Perinatal exposure [PERINATAL]	1	100.0%	1	33.3%	2	50.0%
Child other risk confirmed [OTHER]	0	0.0%	2	66.7%	2	50.0%
Total	1	100%	3	100%	4	100%

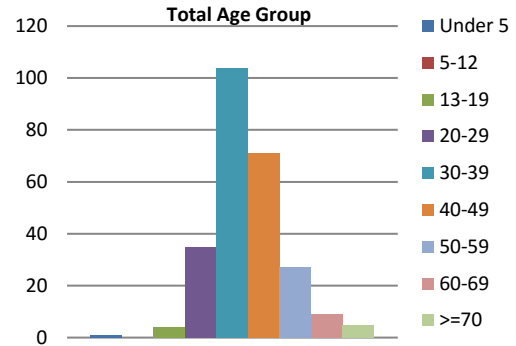
NOTE: All data at the local level is considered provisional and subject to edit checks by state and federal agencies. Adjustments are performed on a monthly basis to compensate for duplicate reports state wide and case validation projects. This report does not include cases from Department of Correction.



FLORIDA DEPARTMENT OF HEALTH IN **MONROE COUNTY**
 Reported HIV (Not AIDS) cases through
December 2016
 (Resume)

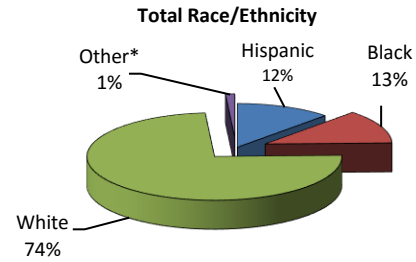
HIV (Not AIDS) cases by age group

Age Group	Female	%	Male	%	Total	%
Under 5	1	3.2%	0	0.0%	1	0.4%
5-12	0	0.0%	0	0.0%	0	0.0%
13-19	3	9.7%	1	0.4%	4	1.6%
20-29	9	29.0%	26	11.6%	35	13.7%
30-39	6	19.4%	98	43.6%	104	40.6%
40-49	9	29.0%	62	27.6%	71	27.7%
50-59	2	6.5%	25	11.1%	27	10.5%
60-69	1	3.2%	8	3.6%	9	3.5%
>=70	0	0.0%	5	2.2%	5	2.0%
Unknown	0	0.0%	0	0.0%	0	0.0%
Total	31	100.0%	225	100.0%	256	100.0%



Adult/Adolescent & Pediatric HIV (Not AIDS) cases by race/ethnicity

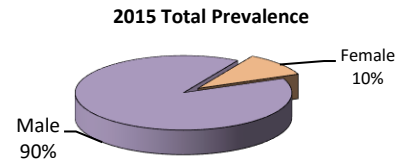
Race/ Ethnicity	Adult/Adolescent		Pediatric		Total	
	Cases	%	Cases	%	Cases	%
Hispanic	31	12.2%	0	0.0%	31	12.1%
Black	31	12.2%	1	100.0%	32	12.5%
White	190	74.5%	0	0.0%	190	74.2%
Other*	3	1.2%	0	0.0%	3	1.2%
Unknown	0	0.0%	0	0.0%	0	0.0%
Total	255	100%	1	100%	256	100%



* Other Includes: American Indian/Alaska Native, Asian, Native Hawaii/Pacific Islander, Legacy Asian, Multi-Race

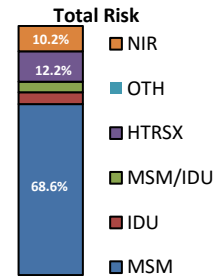
HIV (Not AIDS) and Total Prevalence [PLWHA] through 2015, as of June 2016

2015 PLWHA	HIV Prevalence		Total	
	Cases	%	Cases	%
Female	23	10.1%	67	10.4%
Male	204	89.9%	577	89.6%
Total	227	100%	644	100%



Adult HIV (Not AIDS) cases by risk category

Adult Exposure Category	Female		Adult Adolescent		Male		Total	
	Cases	%	Cases	%	Cases	%	Cases	%
Adult male-to-male sexual contact [MSM]					175	77.8%	175	68.6%
Adult injection drug use [IDU]	6	20.0%			6	2.7%	12	4.7%
Adult MSM & IDU					11	4.9%	11	4.3%
Adult heterosexual contact [HTRSX]	17	56.7%			14	6.2%	31	12.2%
Adult other risk*	0	0.0%			0	0.0%	0	0.0%
Adult no risk factor reported [NRR]	7	23.3%			19	8.4%	26	10.2%
Total	30	100%	225	100%	255	100%	255	100%



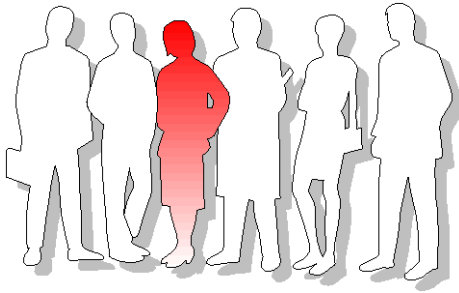
* Other risk includes: Adult receiving clotting factor, Hemophiliac, Perinatal exposure w/HIV at age 13+ years

Pediatric HIV (Not AIDS) Cases by risk category

Pediatric Exposure Category	Female		Pediatric		Male		Total	
	Cases	%	Cases	%	Cases	%	Cases	%
Perinatal exposure [PERINATAL]	1	100.0%			0	#DIV/O!	1	100.0%
Child receiving clotting factor [HEMOPH]	0	0.0%			0	#DIV/O!	0	0.0%
Child receiving transfusion/transplant	0	0.0%			0	#DIV/O!	0	0.0%
Child other risk confirmed [OTHER]	0	0.0%			0	#DIV/O!	0	0.0%
Child no risk factor reported [NRR]	0	0.0%			0	#DIV/O!	0	0.0%
Total	1	100%	0	#DIV/O!	0	#DIV/O!	1	100%

NOTE: All data at the local level is considered provisional and subject to edit checks by state and federal agencies. Adjustments are performed on a monthly basis to compensate for duplicate reports state wide and case validation projects. This report does not include cases from Department of Correction.

**It is estimated that 1 in 103 adult (≥ 13) residents
in Monroe County are living with HIV/AIDS
through December 2015***



- ✓ **1 in 102 non-Hispanic white adults**
- ✓ **1 in 45 non-Hispanic black adults**
- ✓ **1 in 142 Hispanic adults**
- ✓ **1 in 277 adults from
other race/ethnicity group**

* Note: One-in statements are updated by the Bureau of Communicable Disease,
HIV/AIDS and Hepatitis Section, by June of following year.