

# Epi Monthly

Florida Department of Health in Miami-Dade County

August 2020 Vol 21, Issue 8

## Public Health LOOK OUT!

- September 28th is World Rabies Day. Rabies is a preventable viral disease that can be fatal if not treated appropriately. In the United States it is found mostly in wild animals, however around the world most rabies deaths are caused by dog bites. It is important to keep your pets vaccinated, maintain a safe distance from wild animals, and seek immediate medical attention if exposed to a rabid animal. Visit the [Centers for Disease Control and Prevention](https://www.cdc.gov) for more information.
- September is National Childhood Obesity Awareness Month. Children with obesity are at an increased risk for other health conditions such as diabetes, asthma, sleep apnea, and bone and joint problems. Many factors can influence childhood obesity including genetics, eating and physical activity behaviors, family environments, as well as community and social factors. Visit the [Centers for Disease Control and Prevention](https://www.cdc.gov) for recommendations on how to prevent childhood obesity and support healthy growth.
- September is also National Preparedness Month. This year's theme is "Disasters Don't Wait. Make Your Plan Today." Visit [ready.gov](https://www.ready.gov) for weekly guidance for the month of September on preparing yourself and your family for emergencies. Now more than ever it is important to have a plan in place for handling a disaster during a pandemic.

For the most recent information on COVID-19 in Florida please visit:

<https://floridahealthcovid19.gov/>

## In this Issue

Public Health Lookout	1
COVID-19 Resources and Guidance	2
EDC-IS Influenza Respiratory Illness Surveillance Report	4
Selected Reportable Disease and Conditions for July 2020	4
What's New at DOH Miami-Dade	5



Click the image to the left to watch the video.

Florida Department of Health in Miami-Dade County  
Epidemiology, Disease Control, and Immunization Services  
8175 NW 12th Street, Suite 316  
Miami, FL 33126  
Phone: 305-470-5660  
Fax: 305-470-5533  
eFax: 786-732-8714



# Parents and Caregivers Play an Important Role During COVID-19

## COVID-19 RESOURCES FOR PARENTS AND CAREGIVERS

Parents and caregivers, you play a vital role in helping children feel safe and secure. As we adjust to this new “normal,” children may feel sad and worried about their friends, family and even themselves. Below are some tips and resources that will help your family have conversations about COVID-19, manage stress, and obtain additional support for your family.

### Talking to Kids

- **REMAIN CALM** - Children react to both what you say and how you say it.
- **LIMIT INFORMATION** - Too much information on one topic can lead to anxiety.
- **BE AVAILABLE** - Take time to talk and answer their questions.

### Coping & Managing Stress

- **HEALTHY** - Exercise, take deep breaths, meditate and eat well-balanced meals.
- **STAY CONNECTED** - Take the time to talk to others about how you are feeling.
- **UNWIND** - Do activities with your family that you enjoy.

### Toddlers & Preschoolers

- **COMMUNICATE** - Praise, hugs and high-fives show positive attention to your child.
- **STRUCTURE & RULES** - Be consistent and develop rules your child can understand.
- **GIVING DIRECTIONS** - Give clear directions that fit your child’s age.

### ACCESS Florida

The Department of Children and Families programs that can help Florida families:

- Food Assistance
- Temporary Cash Assistance
- Medicaid
- Refugee Assistance

## Additional Resources

Distance Learning..... [www.fl DOE.org/em-response/distance-learning.shtml](http://www.fl DOE.org/em-response/distance-learning.shtml)  
 General..... [www.fl DOE.org/em-response](http://www.fl DOE.org/em-response)  
 Schools & Child care..... <https://floridahealthcovid19.gov/schools>  
 Students with Emotional/Behavioral Challenges ..... [www.sednetfl.info](http://www.sednetfl.info)  
 Ounce of Prevention ..... [www.ounce.org](http://www.ounce.org)  
 Substance Abuse & Mental Health..... [www.myflfamilies.com/service-programs/samh](http://www.myflfamilies.com/service-programs/samh)  
 CDC ..... [www.cdc.gov/coronavirus/2019-ncov/community/schools-childcare/index.html](http://www.cdc.gov/coronavirus/2019-ncov/community/schools-childcare/index.html)  
 211..... <http://211.org/pages/about>





# Carpooling

Here are ways that you can help prevent the spread of COVID-19 when carpooling:



**WEAR MASKS**  
in a shared vehicle

Use **FRESH AIR** through  
**VENTS** or **WINDOWS**



**COVER COUGHS**  
and **SNEEZES**

**CLEAN** and **DISINFECT**  
surfaces often



**LIMIT THE NUMBER**  
of people

Use proper  
**HAND HYGIENE**



**RIDE** to work **WITH**  
the **SAME PEOPLE**

Stay at least **SIX FEET**  
**APART** while waiting



U.S. Department of  
Health and Human Services  
Centers for Disease  
Control and Prevention



If you are sick or had close contact with a person with COVID-19, stay home unless seeking medical care.

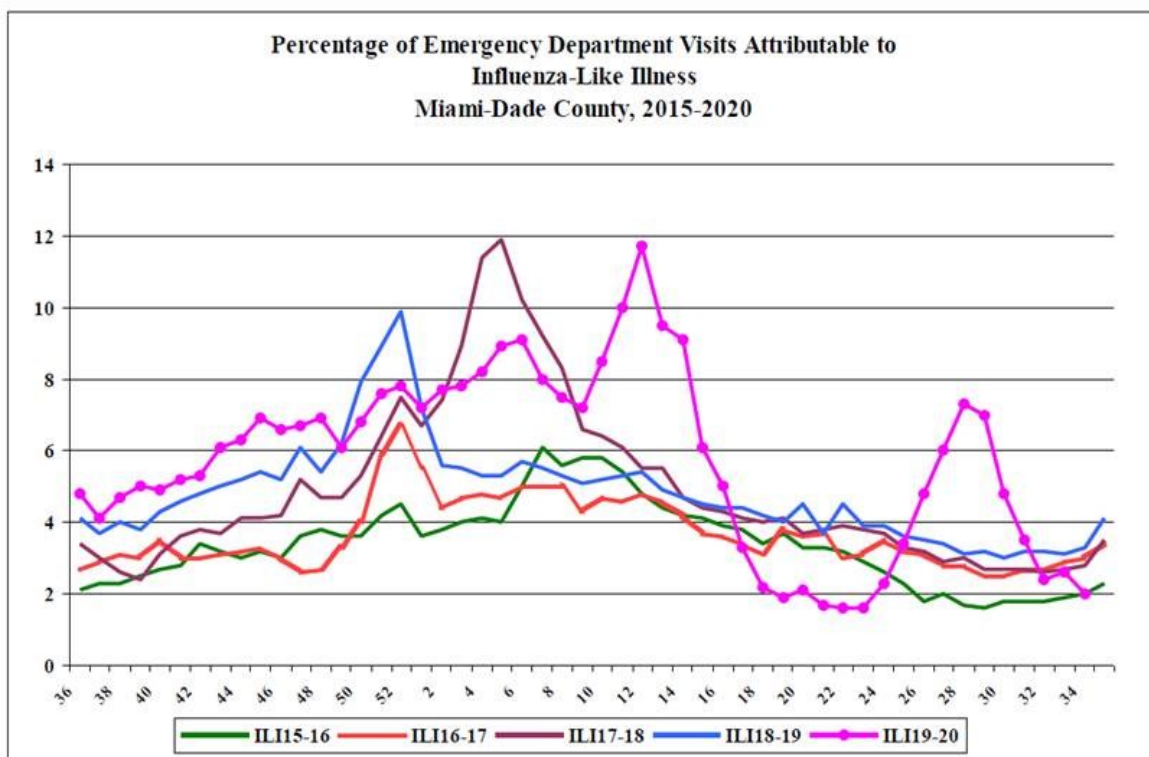
For more information on how to stay safe at work, visit [cdc.gov/coronavirus](https://www.cdc.gov/coronavirus)

# Florida Department of Health in Miami-Dade County Epidemiology, Disease Control and Immunization Services

## Influenza Like Illness Surveillance Report

On a daily basis, all of Miami-Dade County's emergency department (ED) hospitals electronically transmit ED data to the Florida Department of Health. This data is then categorized into 11 distinct syndromes. The influenza-like illness (ILI) syndrome consists of fever with either cough or sore throat. It can also include a chief complaint of "flu" or "ILI". This season's 2019-2020 data is compared to the previous 4 influenza seasons (2015-2016, 2016-2017, 2017-2018, 2018-2019).

### Influenza-Like-Illness, All Age



Across all ages, there were 22,773 ED visits; among them 460 (2.0%) were ILI. During the same week last year, 3.3% of ED visits were ILI.

### PARTICIPATE IN INFLUENZA SENTINEL PROVIDER SURVEILLANCE

#### Florida Department of Health in Miami-Dade County NEEDS Influenza Sentinel Providers!

Sentinel providers are key to the success of the Florida Department of Health's Influenza Surveillance System. Data reported by sentinel providers gives a picture of the influenza virus and ILI activity in the U.S. and Florida which can be used to guide prevention and control activities, vaccine strain selection, and patient care.

- Providers of any specialty, in any type of practice, are eligible to be sentinel providers.
- Most providers report that it takes **less than 30 minutes a week** to compile and report data on the total number of patients seen and the number of patients seen with influenza-like illness.
- Sentinel providers can submit specimens from a subset of patients to the state laboratory for virus isolation **free of charge**.

For more information, please contact  
**Stephanie Calle** at 305-470-5660.



# Miami-Dade County Monthly Report Select Reportable Disease/Conditions July 2020

Diseases/Conditions	2020 Current Month	2020 Year to Date	2019 Year to Date	2018 Year to Date
<b>HIV/AIDS</b>				
AIDS*	27	193	252	273
HIV	71	614	876	822
<b>STD</b>				
Infectious Syphilis*	34	251	257	225
Chlamydia*	1025	6251	8868	7398
Gonorrhea*	424	2250	2726	1933
<b>TB</b>				
Tuberculosis**	6	47	76	70
<b>Epidemiology, Disease Control &amp; Immunization Services</b>				
<b>Epidemiology</b>				
Campylobacteriosis	55	312	523	510
Chikungunya Fever	0	0	0	0
Ciguatera Poisoning	0	5	24	19
Cryptosporidiosis	1	13	31	18
Cyclosporiasis	0	2	17	0
Dengue Fever	0	10	0	0
Escherichia coli, Shiga Toxin-Producing	1	34	83	92
Encephalitis, West Nile Virus	0	0	0	0
Giardiasis, Acute	6	67	105	107
Influenza, Pediatric Death	0	0	0	1
Legionellosis	2	15	31	29
Leptospirosis	0	0	0	0
Listeriosis	1	4	1	2
Lyme disease	0	3	1	1
Malaria	0	2	3	7
Meningitis (except aseptic)	0	4	6	7
Meningococcal Disease	0	2	2	0
Salmonella serotype Typhi (Typhoid Fever)	0	0	2	2
Salmonellosis	111	426	498	405
Shigellosis	6	79	162	195
Streptococcus Pneumoniae, invasive disease	0	37	0	0
Vibriosis	0	2	10	4
West Nile Fever	4	7	0	0
Zika Virus (non-congenital)	0	0	17	16
<b>Immunization Preventable Diseases</b>				
Measles	0	0	0	3
Mumps	0	1	44	6
Pertussis	1	9	19	12
Rubella	0	0	0	0
Tetanus	0	0	0	0
Varicella	0	24	74	48
<b>Hepatitis</b>				
Hepatitis A	0	8	27	6
Hepatitis B (Acute)	3	36	17	24
<b>Healthy Homes</b>				
Lead Poisoning	5	50	82	124

\*Data is provisional at the county level and is subject to edit checks by state and federal agencies.

\*\* Data on tuberculosis are provisional at the county level.

Data on EDC-IS includes Confirmed and Probable cases.

## What's New at DOH Miami-Dade

- DOH Miami-Dade is under a mosquito borne illness alert. There have been a total of 44 West Nile virus cases in Miami-Dade. Visit the [Centers for Disease Control and Prevention](https://www.cdc.gov) for more information on West Nile.
- The Florida Department of Health advises residents to answer calls from (833) 917-2880 as part of Florida's contact tracing efforts to slow the spread of COVID-19 by informing residents of their potential exposures.
- To find a free testing location near you please visit: <https://www.miamidade.gov/global/initiatives/coronavirus/testing-locations.page>.

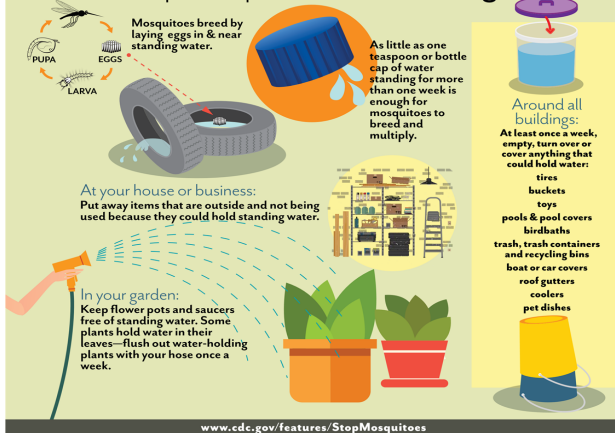
*Thank you  
for wearing a  
face covering.*



### Keep mosquitoes **outside**



### Stop mosquitoes from **breeding**



### To report diseases and for information, call EDC-IS at:

Childhood Lead Poisoning Prevention Program	305-470-6877
Epidemiology and Disease Surveillance	305-470-5660
Hepatitis Program	305-470-5536
HIV/AIDS Program	305-470-6999
Immunization Services	305-470-5660
STD Program	305-575-5430
Tuberculosis Program	305-575-5415
Appointment Line	786-845-0550

### About the Epi Monthly Report

The Epi Monthly Report is a publication of the Florida Department of Health in Miami-Dade County: Epidemiology, Disease Control & Immunization Services. The publication serves a primary audience of physicians, nurses, and public health professionals. Articles published in the Epi Monthly Report may focus on quantitative research and analysis, program updates, field investigations, or provider education. For more information or to submit an article, please contact Vanessa Villamil at 305-470-5643 or [vanessa.villamil@flhealth.gov](mailto:vanessa.villamil@flhealth.gov).

