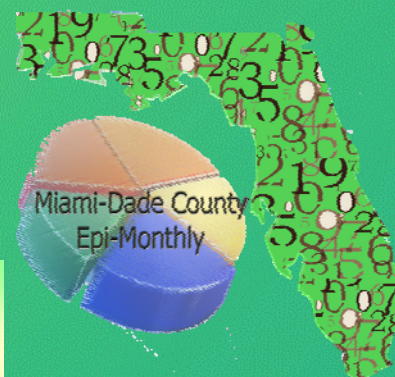


Epi Monthly Report

Miami-Dade County Health Department Healthy Homes Program Overview

Asit Sarkar, PhD and Lakisha Thomas, MPH



Inside this issue:

*Miami-Dade County
Health Department
Healthy Homes Pro-
gram Overview*

1

*Miami-Dade County
Health Department
Healthy Homes Pro-
gram Overview*

2

*Selected Notifiable
Disease Reports,
Historical data,
May 2009*

3

Avian Flu Watch

4

*Monthly Report, Selected
Reportable Diseases/
Conditions in May 2009*

5

*Fermin Leguen MD, MPH
Chief Physician, Miami-Dade
County Health Department
Epidemiology, Disease Control &
Immunization Services
8600 NW 17th Street
Suite 200
Miami, Florida 33126*

**Miami-Dade County
HEALTH DEPARTMENT**
www.madehealth.org



Goal of the Healthy Homes Program

Families in Miami-Dade County will be aware of indoor environmental hazards, and will know how to attain community resources to help them create and maintain healthy and safe homes. We are working to make a difference one home at a time.

The Florida Healthy Homes Program seeks to promote healthy and safe homes by:

1. Raising awareness of environmental health risks in homes such as lead-based paint, mold, carbon monoxide, pesticides, and hazardous household products through methods such as statewide marketing, one-on-one family education, and realtor and property owner education.
2. Referring families to local health and housing programs that can help mitigate

hazards in the home before someone gets sick or hurt.

3. Promoting epidemiology studies to pinpoint areas of need, assess risk factors, identify disparities, and evaluate the effectiveness of interventions.

• Core Healthy Homes Principles:

1. Keep it Clean
2. Keep it Dry
3. Keep it Well-Ventilated
4. Keep it Contaminant-Free
5. Keep it Pest-Free
6. Keep it Safe
7. Keep it Well-Maintained

• Health Risks Addressed

1. Lead Exposure
2. Asthma and Allergies
3. Poisoning (CO, pesticides)
4. Home Safety/Injury Prevention
5. Radon Exposure

Management of the Healthy Homes Program

The Miami-Dade Healthy Homes Program is located at the Miami-Dade County Health Department (MDCHD) Office of Epidemiology, Disease Control & Immunization Services.

The primary activities of the Healthy Homes Coach(s) are:

1. Developing Client Identification Partners (CIP) that can assist with client identification.
2. Providing healthy homes coaching to clients. This includes providing health education and making referrals to service agencies.
3. Documenting / evaluating how healthy homes coaching results in client outcomes (safer, healthier homes).

The primary activities of the Client Identification Partners (CIP) are:

1. Provides healthy homes education and distributes healthy homes booklet to the family.
2. Conducts a quick home assessment during routine home visits to new moms/clients.
3. Makes referrals to the healthy homes coach.

- **Evaluation of the MDCHD Healthy Homes Program**

The CHD Healthy Homes Coach will document individual client risks, services, education, and referrals. In addition, a telephone survey will be administered to evaluate client outcomes 3 months after the initial Healthy Homes Coach consultation. The purpose of

the survey is to determine if the client reports that they:

1. Gained knowledge from education provided by the Healthy Homes Coach.
2. Contacted referral resource organizations and receiving support and/or services for environmental hazards.
3. Took other actions to prevent, reduce or eliminate exposure to the hazards identified.

Key Messages: Together we can make a difference!

- Families can have environmental health hazards in their home and not even realize it.
- Children may be more vulnerable to environmental exposures than adults.
- It is easier to prevent exposure to some hazards than it is to remove them and treat their effects.
- Educate families on how to make and keep healthy and safe homes.



2009 June is...

Home Safety Month

Fireworks Safety Month

Myasthenia Gravis Awareness Month

National Aphasia Awareness Month

National Scleroderma Awareness Month

National Scoliosis Awareness Month

Vision Research Month

Sun Safety Week

National Headache Awareness Week

National Cancer Survivors Day

Caribbean American HIV/AIDS Awareness Day

National Men's Health Week

Helen Keller Deaf - Blind Awareness Week

National ASK Day

Eye Safety Awareness Week

National HIV Testing Day

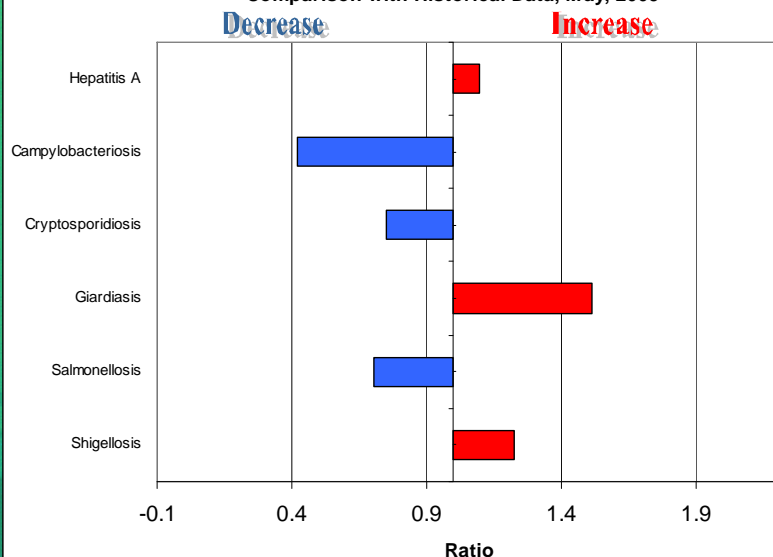


Home Safety Council Resource Center

Check out the Home Safety Council for further home safety resources. This program is dedicated to home injury prevention education and developing resources for all ages and locations. These available resources have helped educate people of all ages to be safer in and around their homes.

The educational resources include from brochures to posters to classroom lesson plans. The Home Safety Council offers a wealth of resources to support any home safety initiative. For further information visit www.homesafetycouncil.org

**Selected Notifiable Disease Reports, Miami-Dade County,
Comparison with Historical Data, May, 2009**



TO REPORT ANY DISEASE AND FOR INFORMATION CALL:

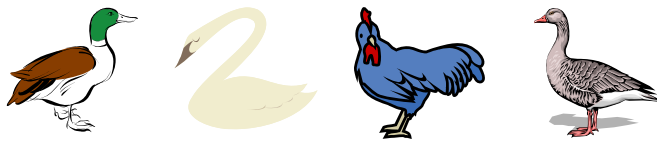
**Epidemiology, Disease Control
& Immunization Services**

Childhood Lead Poisoning

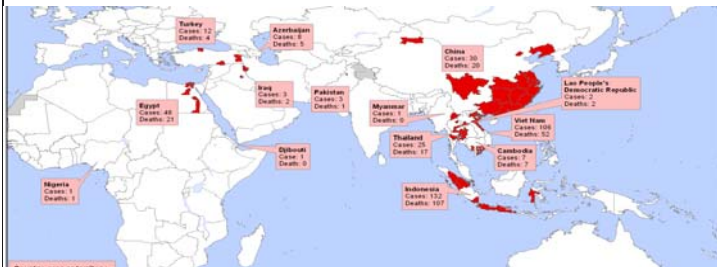
Prevention Program	305-470-6877
Hepatitis	305-470-5536
Immunizations or outbreaks	305-470-5660
HIV/AIDS Program	305-470-6999
STD Program	305-325-3242
Tuberculosis Program	305-324-2470
Immunization Service	305-470-5660
To make an appointment.....	786-845-0550

AVIAN FLU WATCH

Unless indicated, information is current as of
June 2, 2009



- Since 2003, there have been 433 human cases of avian influenza (H5N1) confirmed by the World Health Organization (WHO). Of these, 262 cases have died. This means there is a 61% (262/433) fatality rate.
- **15 Countries with confirmed human cases** include Bangladesh, Cambodia, China, Djibouti, Indonesia, Thailand, Vietnam, Iraq, Azerbaijan, Egypt, Turkey, Nigeria, Pakistan, Myanmar, and Lao People's Democratic Republic.
- **No human cases of avian influenza (H5N1) have**



been reported in the United States.

- **H5N1 has been confirmed in birds in several other countries since 2003.** H5N1 has been documented in birds in more than 30 countries in Europe & Eurasia, South Asia, Africa, East Asia and the Pacific, and the Near East. For a list of these countries, visit the World Organization for Animal Health Web Site at http://www.oie.int/download/AVIAN%20INFLUENZA/A_AI-Asia.htm.
 - **No restrictions on travel to affected countries have been imposed.** Travelers should avoid contact with live poultry and monitor their health for ten days after returning from an affected country.
- SOURCES: WHO, OIE, CDC

PARTICIPATE IN INFLUENZA

SENTINEL
PROVIDER SURVEILLANCE

The Miami-Dade County Health Department NEEDS Influenza Sentinel Providers!!

Sentinel providers are key to the success of the Florida Department of Health's Influenza Surveillance System. Data reported by sentinel providers gives a picture of the influenza virus and ILI activity in the U.S. and Florida which can be used to guide prevention and control activities, vaccine strain selection, and patient care.

- Providers of any specialty, in any type of practice, are eligible to be sentinel providers.
- Most providers report that it takes **less than 30 minutes a week** to compile and report data on the total number of patients seen and the number of patients seen with influenza-like illness.
- Sentinel providers can submit specimens from a subset of patients to the state laboratory for virus isolation **free of charge**.

For more information, please contact
Erin O'Connell at 305-470-5660.

About the Epi Monthly Report

The Epi Monthly Report is a publication of the Miami-Dade County Health Department, Epidemiology, Disease Control & Immunization Services. The publication serves a primary audience of physicians, nurses, and public health professionals. Articles published in the Epi Monthly Report may focus on quantitative research and analysis, program updates, field investigations, or provider education. For more information or to submit an article, contact Lizbeth Londoño at 305-470-6918.

Monthly Report

Selected Reportable Diseases/Conditions in Miami-Dade County, May 2009

Diseases/Conditions	2009 this Month	2009 Year to Date	2008 Year to Date	2007 Year to Date	2006 Year to Date	2005 Year to Date
AIDS ^{*Provisional}	N/A	N/A	N/A	N/A	N/A	N/A
Campylobacteriosis	6	36	54	46	57	47
Ciguatera Poisoning	0	3	10	0	0	0
Cryptosporidiosis	1	7	7	13	6	12
Cyclosporiasis	0	0	4	0	0	0
Dengue Fever	0	3	1	1	1	0
<i>E. coli</i> , O157:H7	0	0	2	1	0	0
<i>E. coli</i> , Non-O157	0	0	1	0	0	0
Encephalitis (except WNV)	0	0	1	0	0	0
Encephalitis, West Nile Virus	0	0	0	0	0	0
Giardiasis, Acute	34	247	91	92	83	65
Hepatitis A	3	25	15	12	16	26
Hepatitis B	0	4	7	7	11	23
HIV ^{*Provisional}	N/A	N/A	N/A	N/A	N/A	N/A
Influenza A (H5)	0	0	0	0	0	0
Influenza Isolates	0	0	0	0	0	0
Influenza Novel Strain	57	57	0	0	0	0
Influenza, Pediatric Death	0	0	0	0	0	0
Lead Poisoning	10	55	56	69	65	63
Legionnaire's Disease	1	5	5	1	1	2
Leptospirosis	0	0	0	0	0	0
Lyme disease	0	0	1	0	0	0
Malaria	1	7	1	0	4	0
Measles	0	0	0	0	0	0
Meningitis (except aseptic)	0	0	3	5	9	3
Meningococcal Disease	1	11	4	3	7	3
Mumps	0	0	2	1	0	0
Pertussis	3	14	9	11	4	2
Rubella	0	0	1	0	0	0
Rubella, Congenital	0	0	0	0	0	0
Salmonellosis	31	148	144	121	179	150
Shigellosis	16	70	18	46	37	113
<i>Streptococcus pneumoniae</i> , Drug Resistant	15	61	56	41	48	6
Tetanus	0	0	0	0	0	0
Toxoplasmosis	0	0	0	1	0	0
Tuberculosis ^{*Provisional}	N/A	N/A	N/A	N/A	N/A	N/A
Typhoid Fever	0	1	0	0	2	2
<i>Vibrio cholera</i> Type O1	0	0	0	0	0	0
<i>Vibrio cholera</i> Non-O1	0	0	0	0	0	0
<i>Vibrio</i> , Other	0	0	0	0	0	0
West Nile Fever	0	0	0	0	0	0



*Data on AIDS are provisional at the county level and are subject to edit checks by state and federal agencies.

** Data on tuberculosis are provisional at the county level.